



DANIEL ADAMS



209C Brighton Road
South Croydon, CR2 6EJ

Guide Price £230,000



209C Brighton Road

South Croydon, CR2 6EJ

Guide Price £230,000 - £240,000

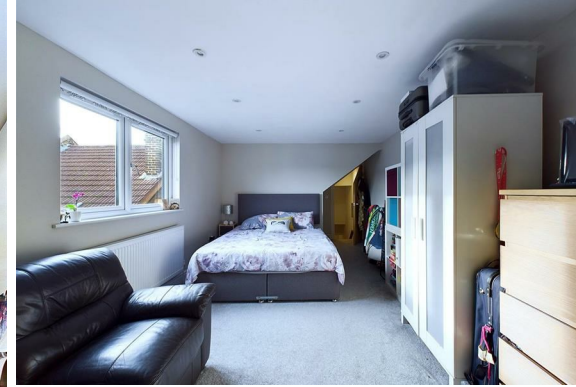
Step into this stunning split-level 1-bedroom apartment, where modern design and thoughtful touches create a home that's both functional and inviting. Converted and fully renovated in 2018, this property offers a sleek, high-specification finish throughout, perfect for first-time buyers, young professionals, or those seeking a smart investment.

Upon arrival, you're welcomed by a convenient entrance lobby, leading to an open and airy landing. The heart of the home is the impressive open-plan kitchen and dining area—an ideal space for hosting friends or enjoying cosy evenings in. Designed with practicality in mind, the layout seamlessly blends style with ease of living.

The modern three-piece bathroom features a bath with an integrated shower, W/C, and hand basin, all finished to a high standard. The spacious double bedroom offers built-in storage to keep everything neatly tucked away, providing a tranquil retreat at the end of the day.

Additional features include a security intercom system for peace of mind and convenient bin storage for hassle-free living.

Situated in the heart of South Croydon, this apartment offers easy access to excellent transport links and local amenities.





Entrance Lobby
3'1" x 5'10" (0.96m x 1.78m)

Landing
4'3" x 5'10" (1.32m x 1.78m)

Upper Landing
3'6" x 2'11" (1.09m x 0.91m)

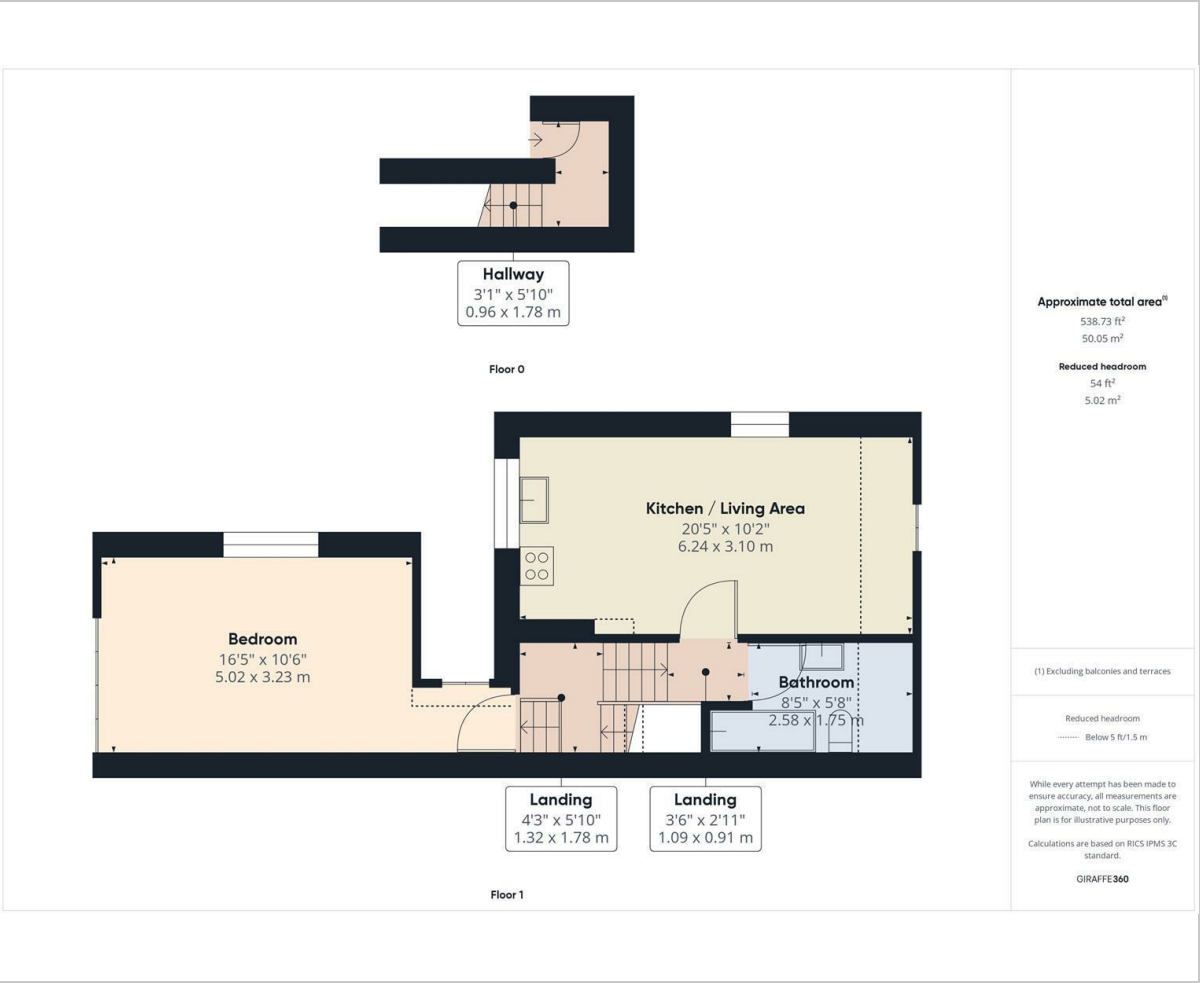
Living Room/Kitchen
20'5" x 10'2" (6.24m x 3.10m)

Bathroom
8'5" x 5'8" (2.58m x 1.75m)

Bedroom
16'5" x 10'7" (5.02m x 3.23m)



Floor Plan



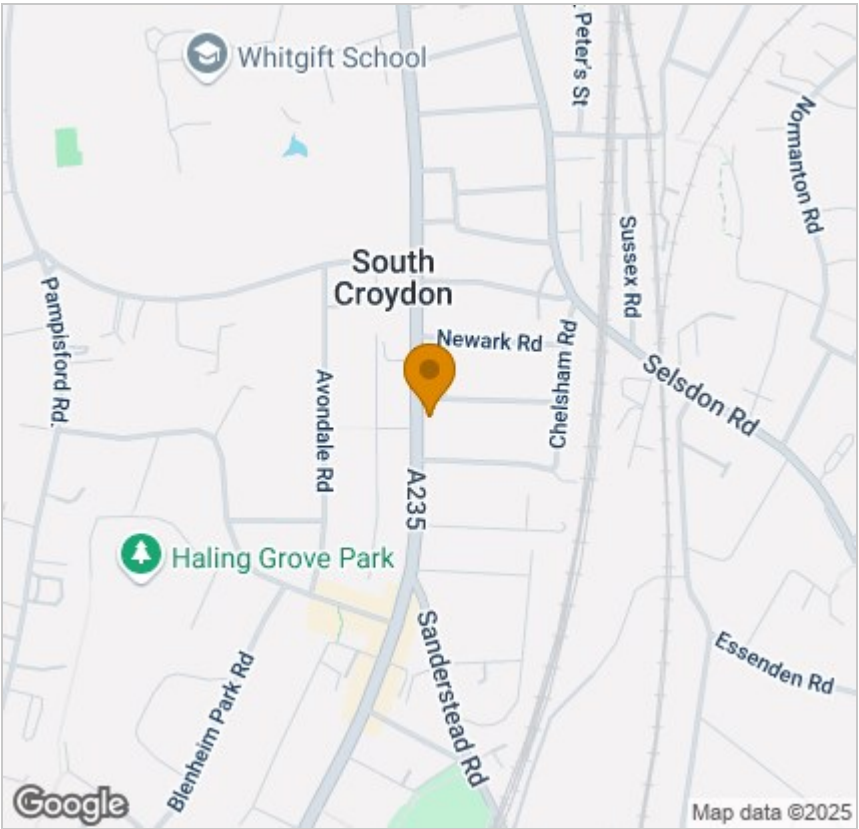
Viewing

Please contact our Coulsdon Sales Office on 0208 763 8878 if you wish to arrange a viewing appointment for this property or require further information.



147 Brighton Road,
Coulsdon,
Surrey
CR5 2NJ
Tel: 020 8763 8878
Email: sales@danieladamsestateagents.co.uk
www.danieladamsestateagents.co.uk

Area Map



Energy Efficiency Graph

