



19 Gawton Crescent
Netherne On The Hill Coulsdon, CR51PN

Price Guide £275,000



19 Gawton Crescent

Netherne On The Hill Coulsdon,
CR51 1DN

Two bedrooms and 2 bathrooms purpose built ground floor apartment with own parking space.

Accommodation:- Communal entrance hallway, Own front door, Entrance hallway with storage Large living room opens to a spacious kitchen with fitted integrated appliances. Two bedrooms, main has an En Suite with a further main bathroom/WC. Outside an allocated parking Bay (11) for 1 car. Further visitors bays within the communal parking area.

Offered for sale with NO CHAIN - READY TO SELL NOW.

Netherne on the Hill is located near both Coulsdon Town Centre and M25 access. Set in approximately 180 acres of land, Netherne on the Hill is a thriving new community and offers a delightful combination of countryside living and modern convenience. Local facilities include a village green with cricket pitch and pavilion, a tennis court and leisure club incorporating a swimming pool and gym exclusive to Netherne Village residents and based in the original St Luke's Church.





Entrance hallway

Lounge

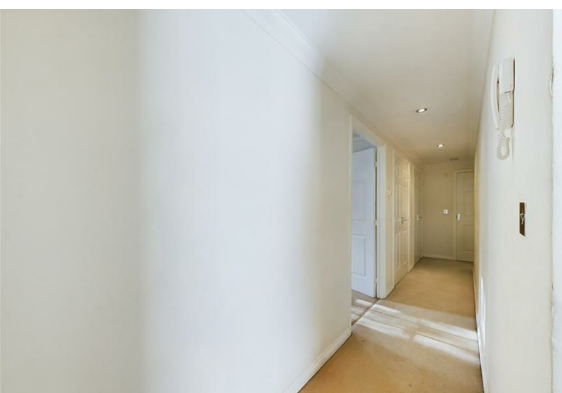
Kitchen

Two bedrooms

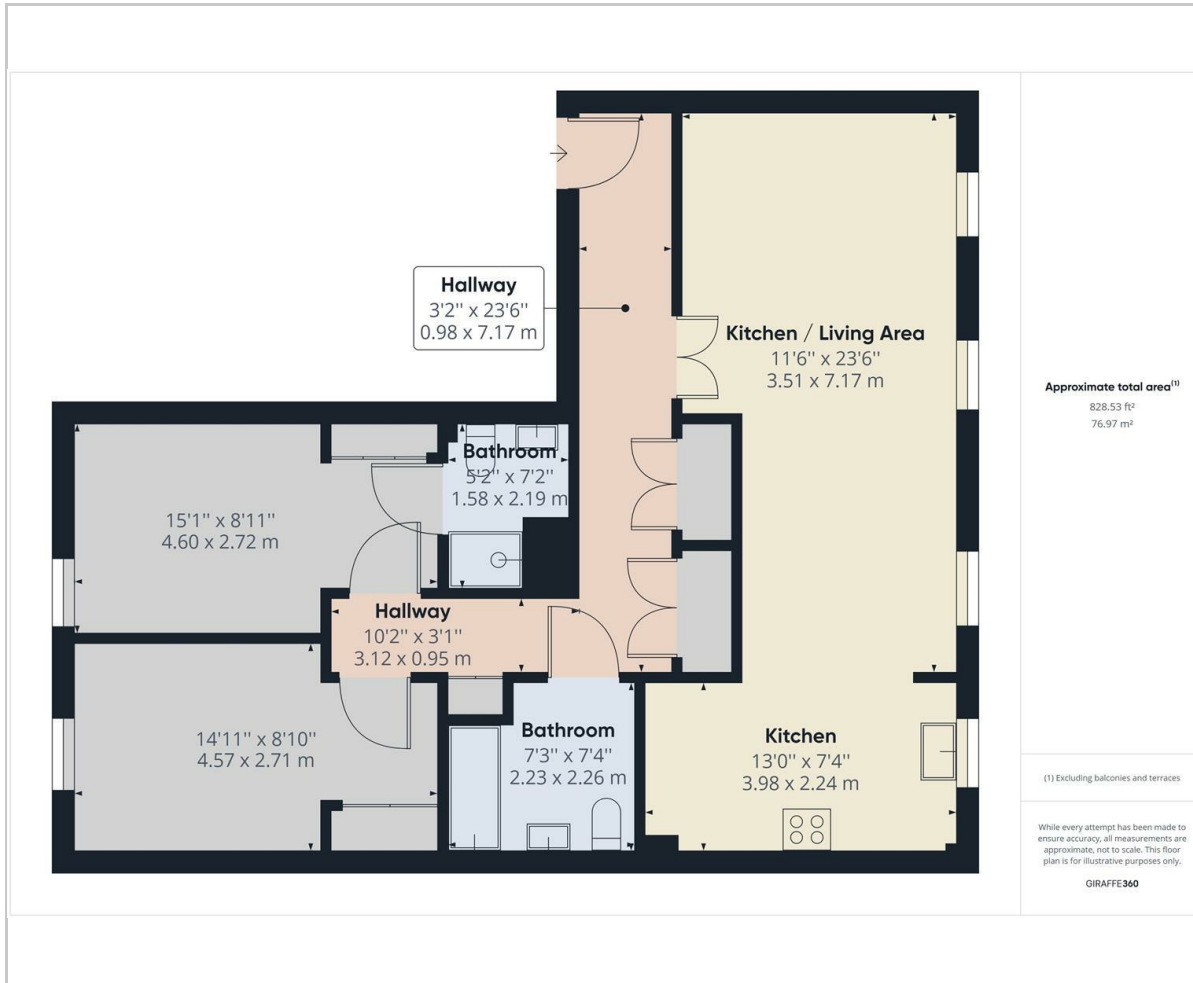
Main with en suite

Family bathroom/WC

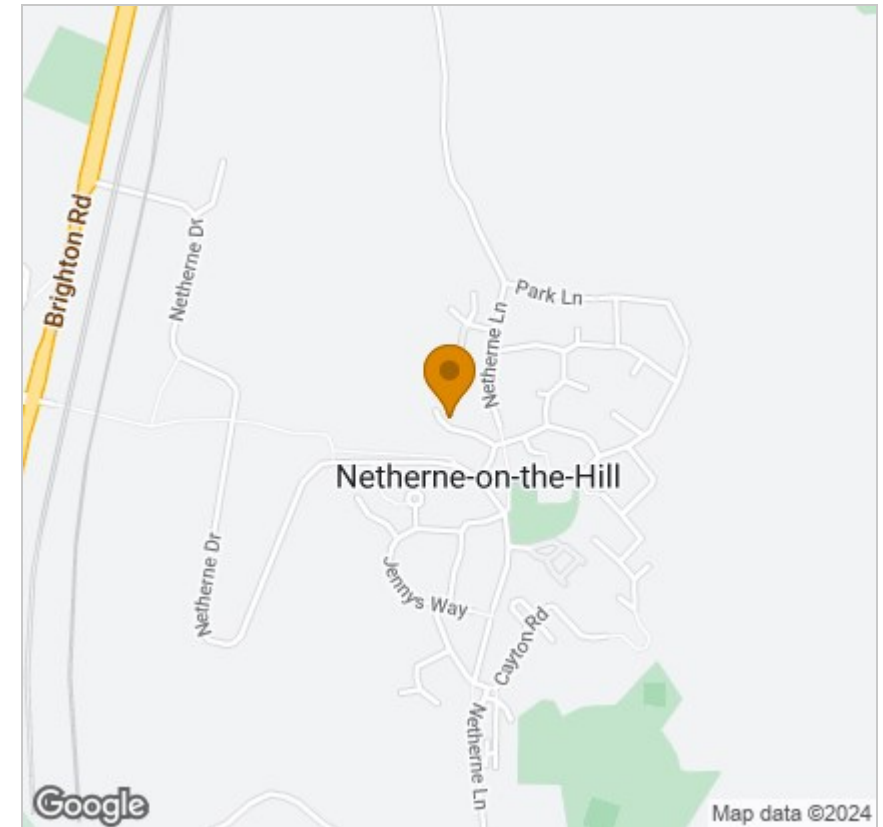
Parking space (11)



Floor Plan



Area Map



Viewing

Please contact our Coulsdon Sales Office on 0208 763 8878 if you wish to arrange a viewing appointment for this property or require further information.



147 Brighton Road,
Coulsdon,
Surrey
CR5 2NJ

Tel: 020 8763 8878

Email: sales@danieladamsestateagents.co.uk

www.danieladamsestateagents.co.uk

Energy Efficiency Graph

