



25A Brighton Road
Hooley, Coulsdon, CR5 3EJ

£1,350 Per Calendar Month



25A Brighton Road, Hooley, Coulsdon, CR5 3EJ

Daniel Adams are pleased to present to the market this brilliant 1 bedroom purpose built maisonette conveniently located for quick access to both M23 and M25. Taking reservations for Friday 10th May - call now to reserve !

Situated on the first floor, this thoughtfully designed property benefits from a large open plan living space including kitchen, one bathroom and one double bedroom. An internal open staircase takes you to a versatile attic room, perfect for a study area, working from home and/or additional living space.

Outside there is a small courtyard area to the rear and 1 allocated parking space to the front.

Set along the Brighton Road in Hooley, all local amenities within walking distance include two 24hr petrol garages, a parade of small local businesses including news agents and a large Starbucks Cafe. The 405 Bus Route runs directly outside the front of the property, providing access to Coulsdon South Train Station within 8 minutes where you find direct lines to Central London mainline Stations, Redhill Town Centre &



Entrance Stairwell
3'6" x 2'10" (1.07m x 0.86m)

Open Plan Living Area
10'11" x 9'6" (3.33m x 2.90m)

Open Plan Kitchen/ Dining Space
24'1" x 13'1" (7.34m x 3.99m)

Bedroom
12'6" x 9'4" (3.81m x 2.84m)

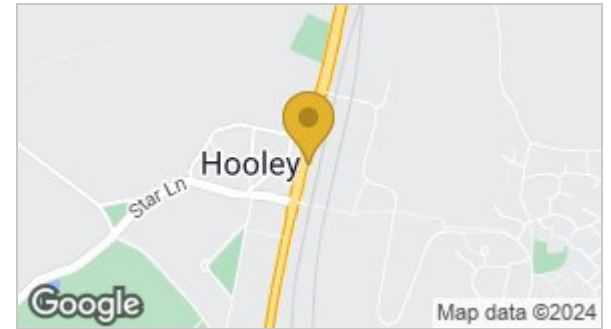
Bathroom
7'7" x 4'11" (2.31m x 1.50m)

Purpose Built Additional Study Space
15'0" x 14'2" (4.57m x 4.32m)

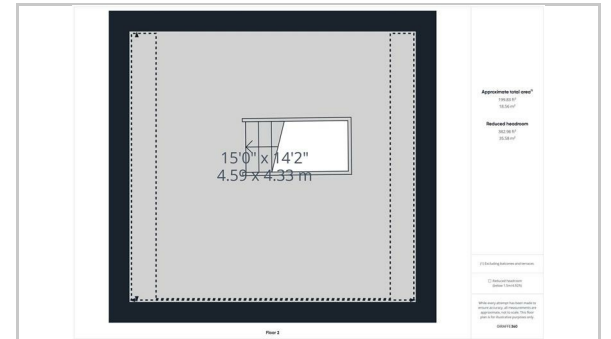
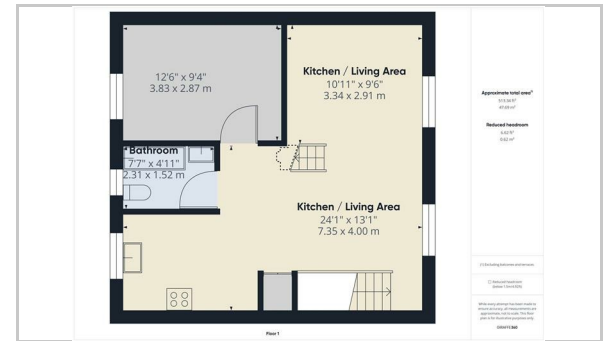
Allocated Parking Space

Courtyard

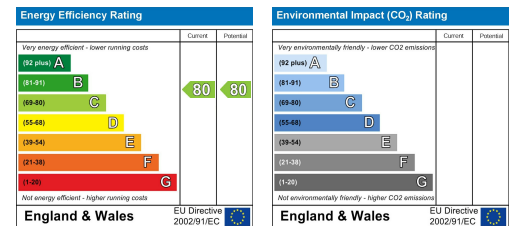
Area Map



Floor Plan



Energy Efficiency Graph



147 Brighton Road,
Coulsdon,
Surrey
CR5 2NJ
Tel: 020 8763 8878
Email: sales@danieladamsestateagents.co.uk
www.danieladamsestateagents.co.uk