



9 Philand Lane
Coulston, CR5 3GY

Offers Over £600,000



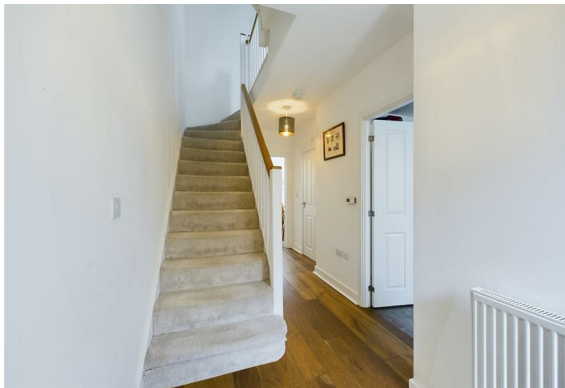
9 Philand Lane Coulsdon, CR5 3GY

Welcome to this stunning 3-bedroom modern townhouse nestled in a prime location across three spacious floors, boasting a captivating outlook to the rear. This well-presented home offers ample storage throughout and is meticulously arranged to optimize comfort and convenience.

The accommodation is thoughtfully spread over the three floors, featuring three bathrooms to accommodate the needs of a modern household seamlessly. Step into the level rear garden and immerse yourself in the tranquility of lush greenery, offering a serene retreat right at your doorstep.

With off-road parking for two cars, convenience is further enhanced, ensuring hassle-free commuting. Situated at the summit of the prestigious Cane Hill development, this residence offers unparalleled access to excellent rail links, esteemed schools, and the vibrant high street of Coulsdon.

The absence of a forward chain makes this property an irresistible opportunity, presenting a seamless and stress-free purchasing experience. Don't miss out on the chance to make this your dream home—call now to arrange a viewing and experience the epitome of modern living firsthand!





- Hallway
- Kitchen
- Living Room
- W/C
- Landing
- Bathroom
- Bedroom
- Bedroom
- Bedroom
- En-suite
- Garden

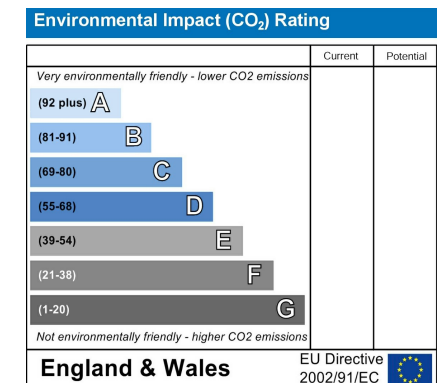
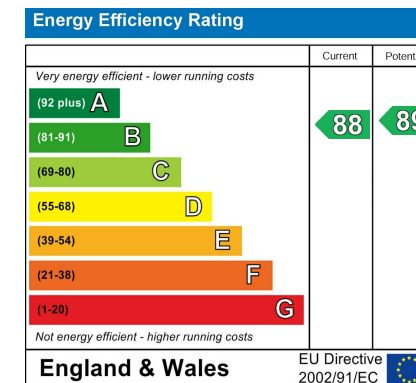
Floor Plan



Area Map



Energy Efficiency Graph



Viewing

Please contact our Coulsdon Sales Office on 0208 763 8878 if you wish to arrange a viewing appointment for this property or require further information.



147 Brighton Road,
Coulsdon,
Surrey
CR5 2NJ
Tel: 020 8763 8878
Email: sales@danieladamsestateagents.co.uk
www.danieladamsestateagents.co.uk