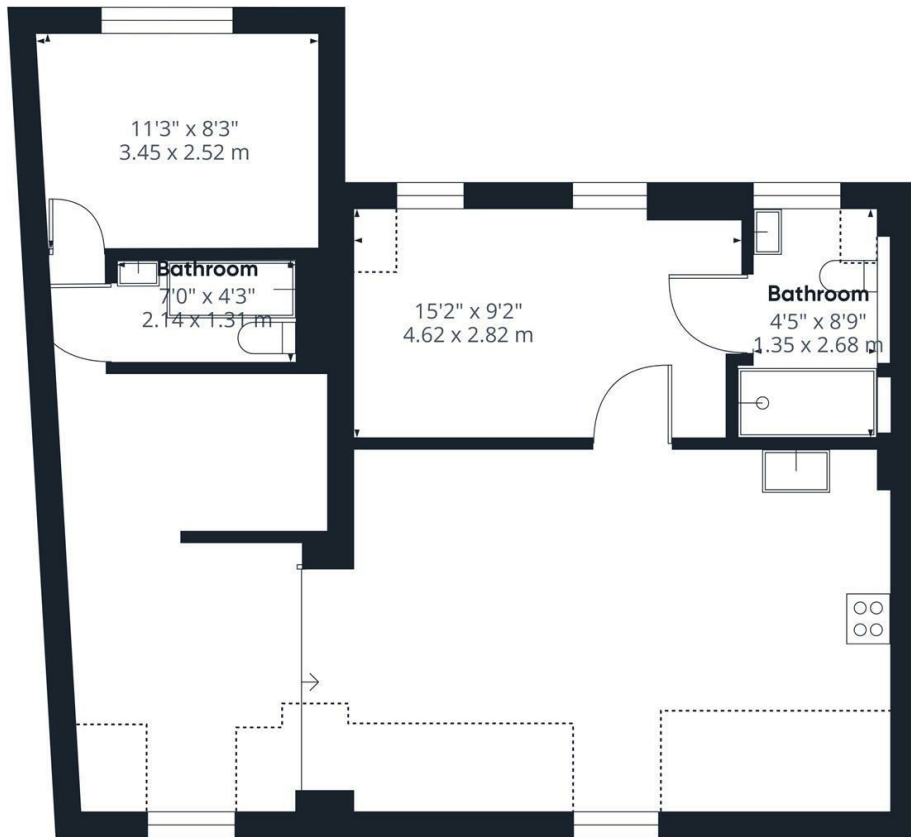


**Church Street
Twickenham
TW1 3NJ**

£2,250 PCM

ChaseBuchanan





Approximate total area*

739.05 ft²
68.66 m²

Reduced headroom

93.22 ft²
8.66 m²

(1) Excluding balconies and terraces

Reduced headroom

..... Below 5 ft/1.5 m

While every attempt has been made to ensure accuracy, all measurements are approximate, not to scale. This floor plan is for illustrative purposes only.

Calculations are based on RICS IPMS 3C standard.

GIRAFFE360

- Newly refurbished
- Fantastic location
- Wood flooring
- Council Tax Band D
- Executive finish
- Close to river
- EPC C

Located in a very picturesque part of Twickenham, close to the river and some lovely walks, this executive apartment is going to be incredibly popular.

Just moments from the station with fast links into central London as well as many shops, bars and restaurants the location is really ideal for a professional couple.

Presented to an exceptionally high standard, with a large open plan kitchen/reception room, two large bedrooms that are bathed with lots of natural light and a modern bathroom.

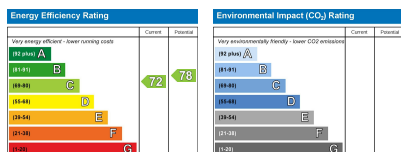
Chase Buchanan are bonded members of ARLA PropertyMark.

For more information or to book a viewing, please contact:

020 8744 2111

ChaseBuchanan

122 Heath Road, Twickenham, Middlesex, TW1 4BW



Care has been taken in the preparation of these particulars, however, their accuracy is not guaranteed and they do not form part of any contract. Measurements stated must be considered maximum.