

**Riverview Gardens
Twickenham
TW1 4RT**

£3,600 PCM

ChaseBuchanan

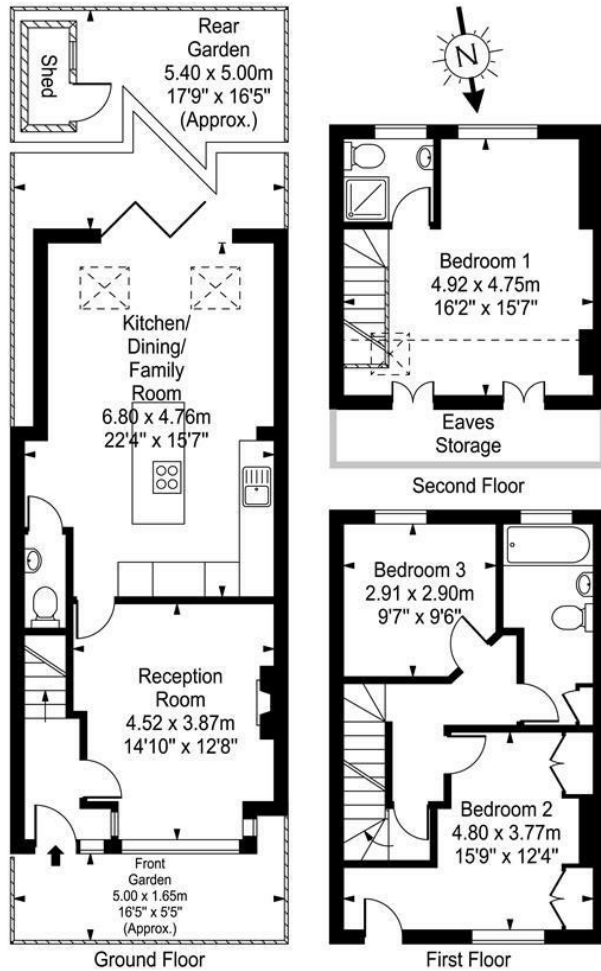


Riverview Gardens

Approx. Gross Internal Area

118 Sq M - 1270 Sq Ft
(Including Eaves Storage)

Key :
--- = Reduced headroom below 1.5m / 5'0"



Every attempt is made to assure accuracy, however measurements are approximate and for illustrative purposes only. Not to scale.
Floor plan by www.frameworkphotos.co.uk

Energy Efficiency Rating		Environmental Impact (CO ₂) Rating	
Current	Potential	Current	Potential
Very energy efficient - lower running costs		Very environmentally friendly - lower CO ₂ emissions	
A		A	
B		B	
C		C	
D		D	
E		E	
F		F	
G		G	

Care has been taken in the preparation of these particulars, however, their accuracy is not guaranteed and they do not form part of any contract. Measurements stated must be considered maximum.

- Period property
- Close to station
- Three Bathrooms
- Council Tax Band F
- Modern finish
- Two reception rooms
- EPC C

This superb three bedroom family house is well appointed in the heart of Strawberry Hill and only a short walk to the river and Radnor Gardens. The house has been beautifully interior-designed and offers well balanced living and entertaining space over three floors.

The property opens into a hallway leading to a generous reception space with an attractive fireplace. The rear space flows into a modern open plan kitchen which is laid with solid oak flooring and features an excellent range of fitted units and cupboards. Bi-fold doors open out to a lovely southerly facing, low maintenance, garden with added decking. Upstairs, on the first floor to the front is a good size bedroom with balcony and double sash windows which flood the room with natural light. There is also an additional double bedroom and a luxurious bathroom. On the top floor, sits the principal bedroom which is wonderfully light and spacious with an en suite bathroom.

Riverview Gardens is ideally located for local schools, moments from River Thames and close to Strawberry Hill mainline station with great links into London Waterloo.

Chase Buchanan are bonded members of ARLA Propertymark.

For more information or to book a viewing, please contact:

020 8744 2111

ChaseBuchanan

122 Heath Road, Twickenham, Middlesex, TW1 4BW