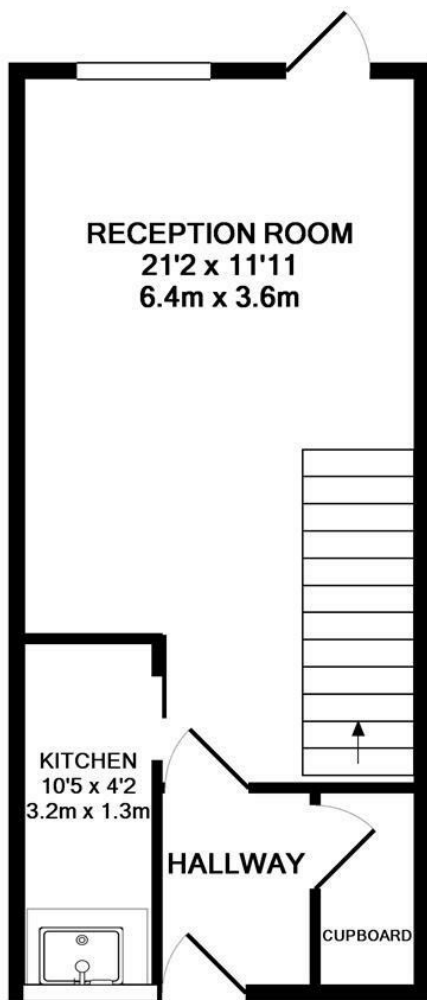


**Tudor Gardens
Twickenham
TW1 4LE**

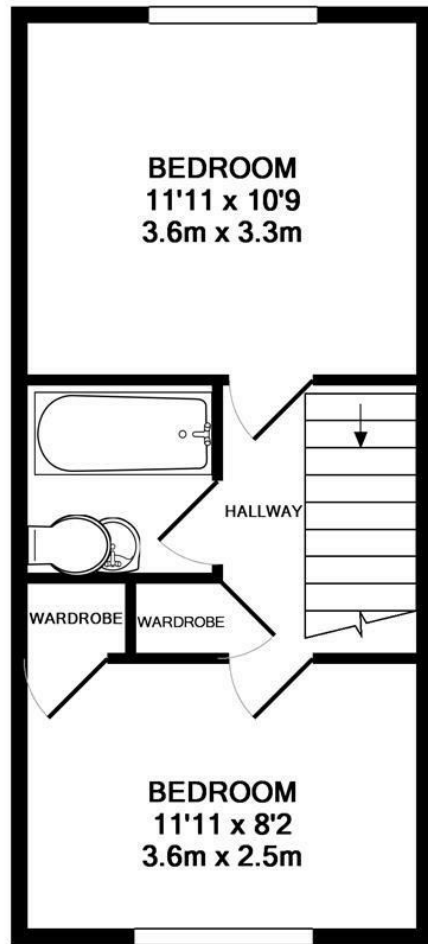
£2,300 PCM

ChaseBuchanan





GROUND FLOOR
APPROX. FLOOR
AREA 324 SQ.FT.
(30.1 SQ.M.)



1ST FLOOR
APPROX. FLOOR
AREA 324 SQ.FT.
(30.1 SQ.M.)

TOTAL APPROX. FLOOR AREA 649 SQ.FT. (60.3 SQ.M.)
Made with Metropix ©2018

Energy Efficiency Rating	Current	Target
Very energy efficient - lower running costs		
A		
B		
C		
D		
E		
F		
G		

Environmental Impact (CO ₂) Rating	Current	Target
Very environmentally friendly - lower CO ₂ emissions		
A		
B		
C		
D		
E		
F		
G		

- Great location
- Off street parking
- Cul-de-sac
- Council Tax Band E
- Large reception
- Close to station
- EPC- C

This fantastic modern house in a popular cul-de-sac is just moments from the high street with a good selection of amenities on your doorstep.

The ground floor has a smart and practical kitchen and a bright reception room overlooking the rear garden. Upstairs you will find two good-sized bedrooms with built-in storage and a luxury bathroom. With the benefit of a private garage.

Tudor Gardens is ideally located to take advantage of all that Twickenham has to offer, from the range of boutique shops in Church Street, to the ambient restaurants and delightful riverside pubs and walks. Situated within a pleasant walk to Marble Hill Gardens along the riverside and within easy access of both St Margarets and Richmond. Commuter links are excellent with Twickenham station providing frequent services to London Waterloo and easy access to the M3/M25 motorways and Heathrow Airport.

The local area is well served by schools, both private and state-run, including St Richard Reynolds School.

Chase Buchanan are bonded members of ARLA Propertymark.

For more information or to book a viewing, please contact:

020 8744 2111

ChaseBuchanan

122 Heath Road, Twickenham, Middlesex, TW1 4BW

Care has been taken in the preparation of these particulars, however, their accuracy is not guaranteed and they do not form part of any contract. Measurements stated must be considered maximum.