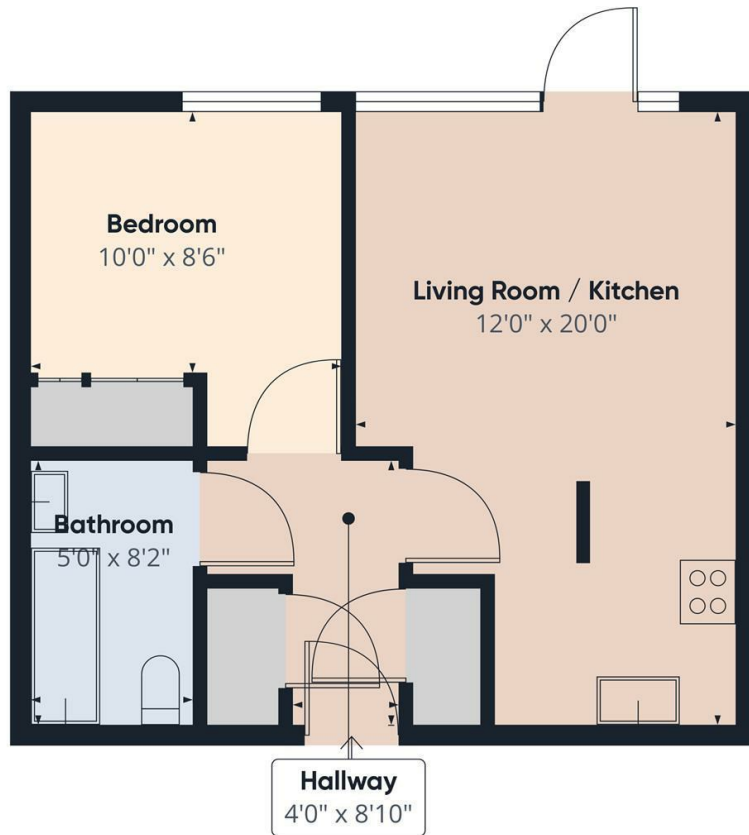


**Challenge Court
Langhorn Drive
Twickenham
TW2 7SY**

£1,600 PCM

ChaseBuchanan





Approximate total area⁽¹⁾
439.92 ft²

(1) Excluding balconies and terraces

While every attempt has been made to ensure accuracy, all measurements are approximate, not to scale. This floor plan is for illustrative purposes only.

GIRAFFE360

- Modern apartment
- Private parking
- Plentiful storage
- EPC D
- Close to transport
- Communal gardens
- Lovely balcony
- Council Tax Band C

A bright and spacious ground floor apartment situated in this very popular development within close proximity of local shops and Twickenham mainline station.

The accommodation offers a good size living/dining room with a large balcony, smart fitted kitchen, double bedroom and a modern bathroom suite.

Further benefits include secure entry phone system, residents parking, large communal gardens.

Challenge Court is ideally located to take advantage of all that Twickenham has to offer, situated within a 10 minute walk along the gated rail track to the station, 0.5 miles from Kneller Gardens and the River Crane, plus easy access to the range of boutique shops in Church Street, ambient restaurants and delightful riverside pubs and walks. Commuter links are excellent with Twickenham station providing good links to London Waterloo, frequent bus routes and easy access to the M3/M25 motorways and Heathrow Airport.

Chase Buchanan are bonded members of ARLA Propertymark.

For more information or to book a viewing, please contact:

020 8744 2111

ChaseBuchanan

122 Heath Road, Twickenham, Middlesex, TW1 4BW

Energy Efficiency Rating		Environmental Impact (CO ₂) Rating	
Current	Potential	Current	Potential
Very energy efficient - lower running costs		Very environmentally friendly - lower CO ₂ emissions	
A		A	
B		B	
C		C	
D		D	
E		E	
F		F	
G		G	

Care has been taken in the preparation of these particulars, however, their accuracy is not guaranteed and they do not form part of any contract. Measurements stated must be considered maximum.