

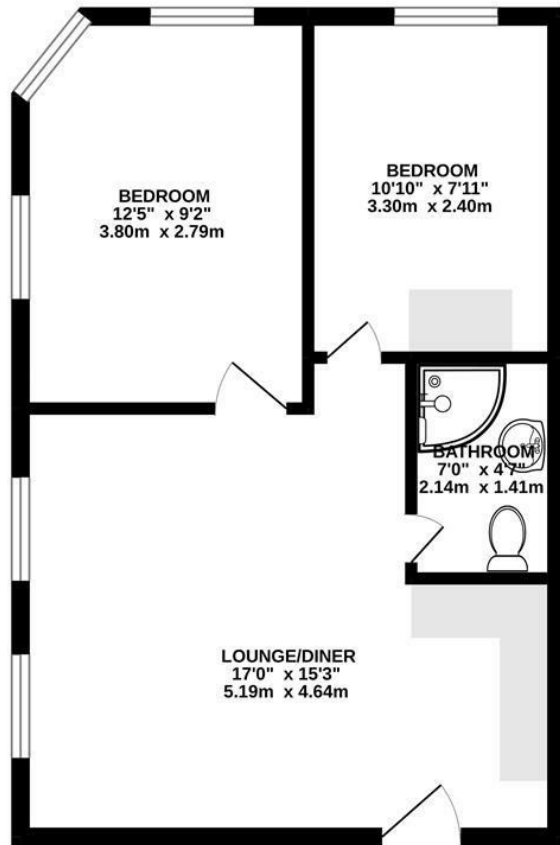
**Laurel Avenue  
Twickenham  
TW1 4JA**

**£1,900 PCM**

**ChaseBuchanan**



FIRST FLOOR  
441 sq.ft. (41.0 sq.m.) approx.



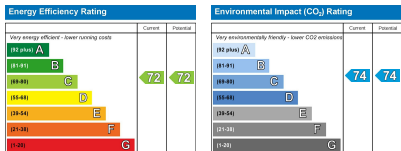
LOUNGE/DINER  
17'0" x 15'3"  
5.19m x 4.64m

BEDROOM  
10'10" x 7'11"  
3.30m x 2.40m

BEDROOM  
12'5" x 9'2"  
3.80m x 2.79m

BATHROOM  
7'0" x 4'7"  
2.14m x 1.41m

TOTAL FLOOR AREA: 441 sq.ft. (41.0 sq.m.) approx.  
Whilst every attempt has been made to ensure the accuracy of the floorplan contained here, measurements of doors, windows, rooms and any other items are approximate and no responsibility is taken for any error, omission or mis-statement. This plan is for illustrative purposes only and should be used as such by any prospective purchaser. The services, systems and appliances shown have not been tested and no guarantee as to their operability or efficiency can be given.  
Made with Metroplex C2022



- Street permit parking
- Central Twickenham
- Wooden floors
- Council Tax Band C
- Two bedrooms
- Modern finish
- EPC rating C

Modern apartment just a stones throw from the high street, shops and restaurants of Twickenham, with local delis and coffee shops just around the corner.

The entire building has been completely re-furbished to an exceptional standard with many modern touches.

Two double bedrooms, both with built-in wardrobes and a superb living/dining room with plenty of space to entertain. The kitchen is absolutely stunning with top of the range appliances.

Laurel Avenue is conveniently located for both the high street, station and river walks plus there are regular buses into Richmond (District line tube), Kingston and a short drive to the M3, with good access to the M25 and M4.

Chase Buchanan are bonded members of ARLA Propertymark.

For more information or to book a viewing, please contact:

020 8744 2111

**ChaseBuchanan**

122 Heath Road, Twickenham, Middlesex, TW1 4BW

Care has been taken in the preparation of these particulars, however, their accuracy is not guaranteed and they do not form part of any contract. Measurements stated must be considered maximum.