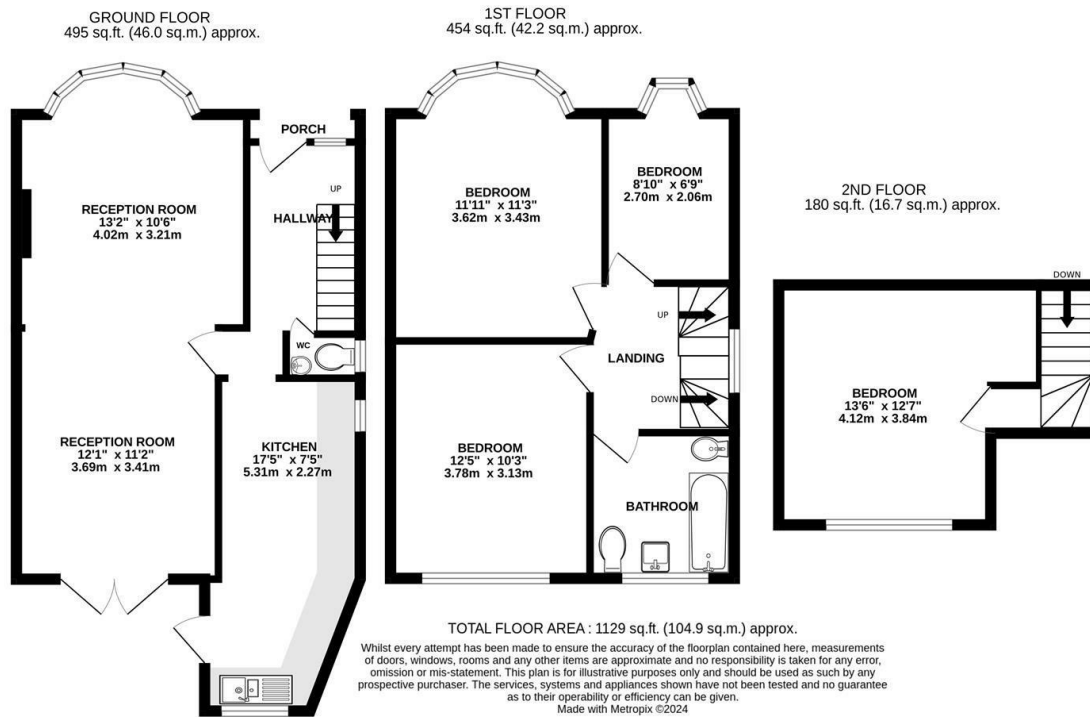


**Kendrey Gardens  
Twickenham  
TW2 7PA**

£3,295 PCM

**ChaseBuchanan**





- Family House
- New Kitchen and Bathroom
- Private parking
- EPC D
- Fully Redecorated
- Large Reception
- Downstairs WC
- Council Tax E

Introducing this delightful family residence, situated in a highly sought-after cul-de-sac, conveniently positioned near local amenities and excellent state and private schools. Moreover, it offers easy access to Twickenham & Whitton stations, facilitating effortless commutes to London Waterloo.

The interior boasts a meticulously maintained space, showcasing generously sized, sun-drenched rooms enhanced with contemporary and tasteful details. The ground floor encompasses spacious reception area, providing ample space for comfortable living. These seamlessly connect to a sizable rear garden, complemented by a modern kitchen and downstairs WC.

On the second floor, you'll find three well-proportioned bedrooms and brand new bathroom, ensuring all the comforts necessary for a family and fourth bedroom upstairs.

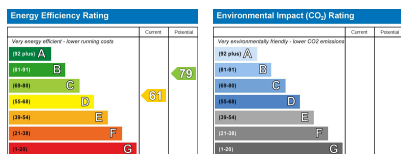
Chase Buchanan are bonded members of ARLA PropertyMark.

For more information or to book a viewing, please contact:

020 8744 2111

**ChaseBuchanan**

122 Heath Road, Twickenham, Middlesex, TW1 4BW



Care has been taken in the preparation of these particulars, however, their accuracy is not guaranteed and they do not form part of any contract. Measurements stated must be considered maximum.