

**Michelham Gardens
Twickenham
TW1 4SD**

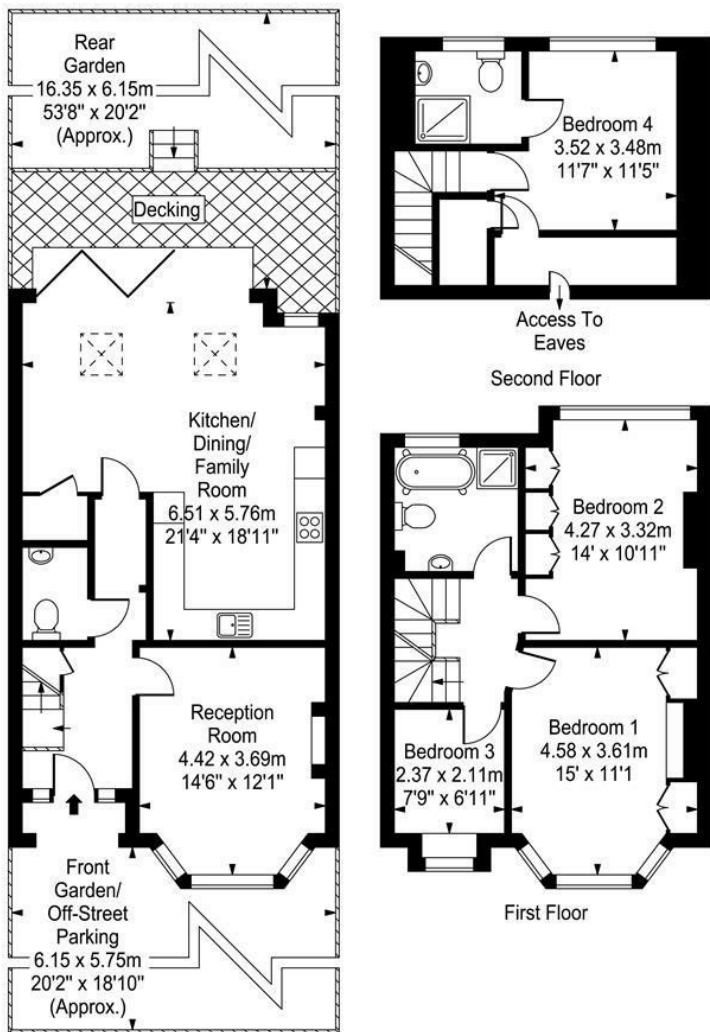
£4,250

ChaseBuchanan

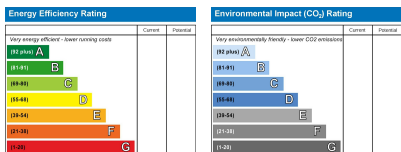


Michelham Gardens

Approx. Gross Internal Area
131 Sq M - 1410 Sq Ft



Every attempt is made to assure accuracy, however measurements are approximate and for illustrative purposes only. Not to scale.
 Floor plan by www.frameworkphotos.co.uk



Care has been taken in the preparation of these particulars, however, their accuracy is not guaranteed and they do not form part of any contract. Measurements stated must be considered maximum.

- Wooden floors
- Large garden
- Built in wardrobes
- EPC D
- Underfloor heating
- Quiet street
- Off street parking

Delighted to introduce this exquisite 4-bedroom terraced house nestled within the picturesque surroundings of Strawberry Hill, situated in the highly desirable Michelham Gardens. Just a stone's throw away from the tranquil River Thames, this property boasts a blend of spaciousness and adaptability.

The ground floor features a welcoming living room, open-plan modern kitchen, overlooking the garden, along with a convenient downstairs W/C and utility room. Upstairs, you'll find two generously sized double bedrooms, a third bedroom, and a family bathroom, all impeccably finished.

A cleverly designed loft conversion adds another dimension to the home, providing a sizable double bedroom complemented by a contemporary ensuite bathroom and fantastic eave storage. Additional benefits include a private driveway and rear garden access.

Michelham Gardens enjoys a coveted position in the heart of Strawberry Hill, with its charming tree-lined streets offering easy reach to the River Thames and Strawberry Hill train station.

For more information or to book a viewing, please contact:

020 8744 2111

ChaseBuchanan

122 Heath Road, Twickenham, Middlesex, TW1 4BW