



Mortimer Crescent, NW6

£475,000

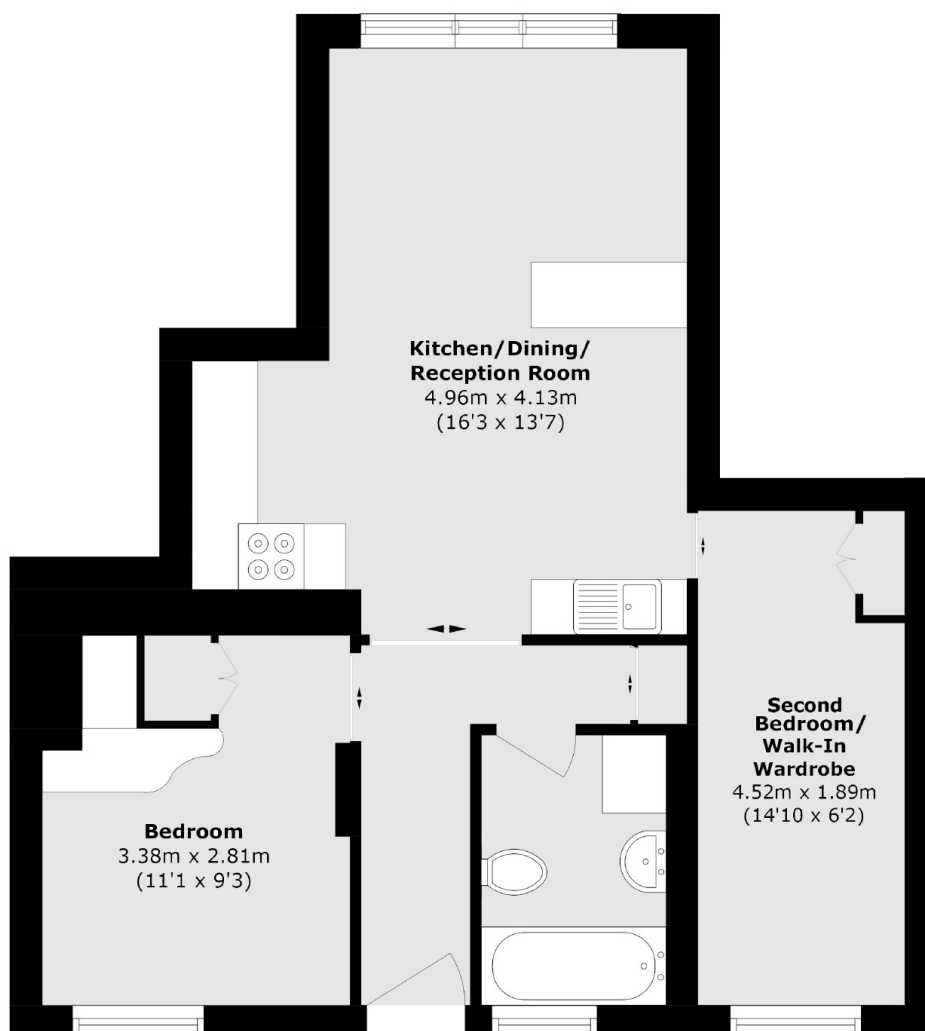
A two bedroom apartment set within this historic Neo-Tudor building, erected on a historic site associated with George Orwell. The property has a spacious open-plan kitchen, reception room, double bedroom and the second bedroom currently set up as a walk-in wardrobe. Communal heating and hot water is included in the service charge.

Situated within a quiet residential area Hillsborough Court is within 0.5 miles of Kilburn Park (Bakerloo line) underground station and Kilburn High Road station (Overground).

Features

- Two Bedroom
- Communal Garden
- Neo-Tudor Building
- Share of Freehold
- Porter Service
- Lift Access

Mortimer Crescent, London, NW6



Total area (approx.): 50.2 sq. m (540.3 sq. ft)

Dexters

St. John's Wood
4-6 St Ann's Terrace
London
NW8 6PJ
Sales
020 7483 6300

Energy Rating: D. We aim to make our particulars both accurate and reliable. However they are not guaranteed; nor do they form part of an offer or contract. If you require clarification on any points then please contact us, especially if you're traveling some distance to view. Please note that appliances and heating systems have not been tested and therefore no warranties can be given as to their good working order.

 **RICS** | Regulated
Estate Agent
and Letting Agent

[dexters.co.uk](https://www.dexters.co.uk)