



St. Ann's Terrace, NW8

£761 Per week

An exceptionally bright two double bedroom first floor apartment just off of St Johns Wood High Street. The property has a spacious living/dining room with high ceilings and wooden floors, separate modern kitchen and stylish bathroom. There are two good size double bedrooms with storage throughout. Ideal for professional shares, small family or couple looking for space.

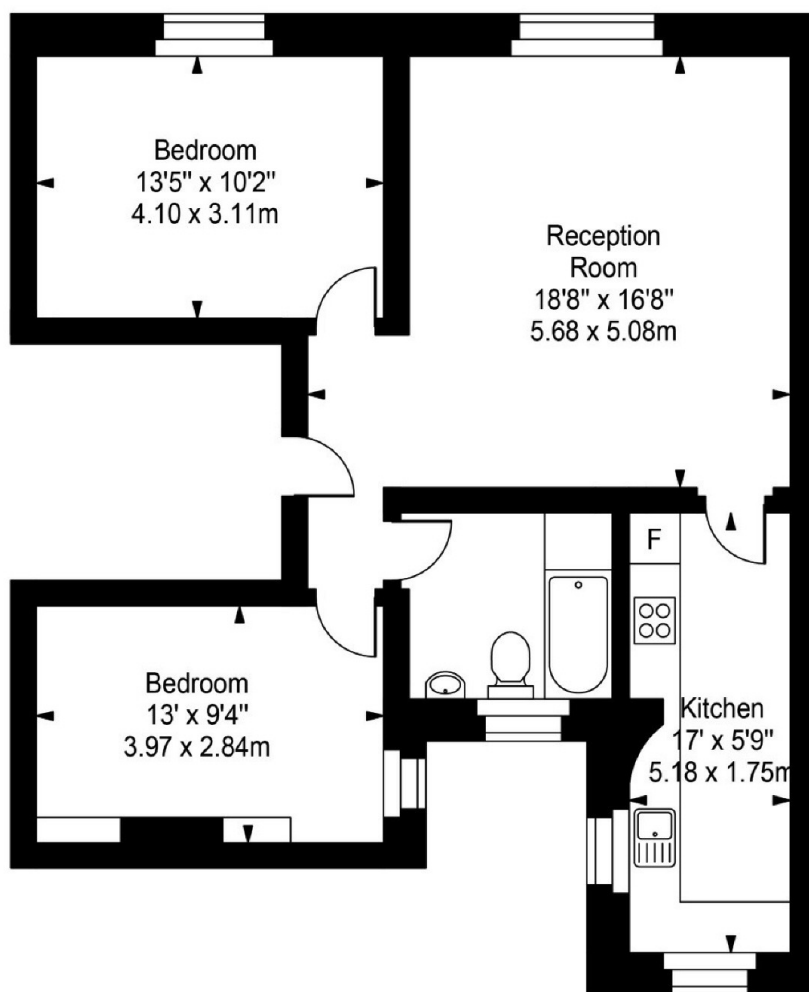
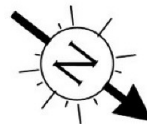
St Ann's Terrace is just off of St Johns Wood High Street and within 0.3 miles of St Johns Wood Underground Station on the Jubilee line giving commuters quick access to the City and West End.

Features

- Two Double Bedrooms
- Modern Kitchen
- Wood Floors Throughout
- High Ceilings
- Unfurnished
- Excellent Location

St. Anns Terrace, London, NW8

St Annes Terrace



First Floor

Approx Gross Internal Area **797 Sq Ft - 74.04 Sq M**

For Illustration Purposes Only - Not To Scale
Floor plan by www.creativeplanetlk.com