



Abbey Road, NW8

£426 Per week

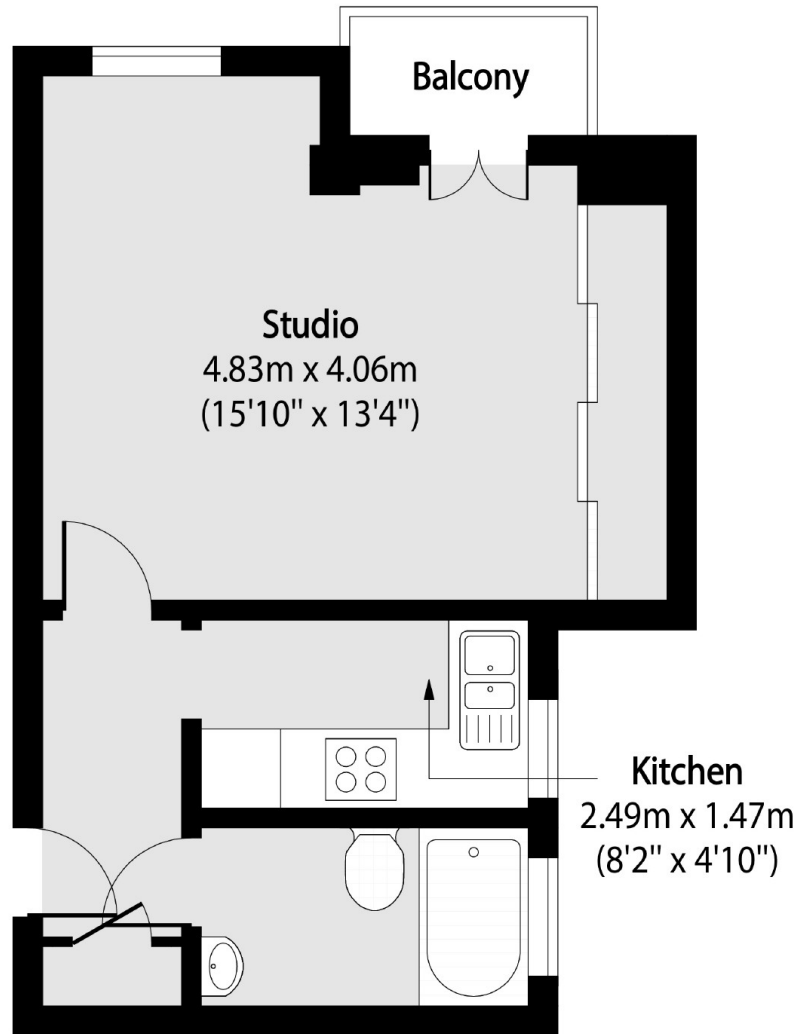
Bright and well-proportioned studio set within the popular Neville Court in St John's Wood. The property features a spacious living/sleeping area, a separate fully fitted kitchen, and a modern bathroom and a balcony

Situated in a well-maintained portered block with lift access, just moments from Regent's Park and St John's Wood Underground Station (Jubilee Line), with shops and cafes nearby.

Features

- Studio Flat
- Separate Kitchen
- Porter
- Balcony
- Wooden Floors
- Lift

Abbey Road, London, NW8



Total area (approx): 28.89 sq m (311 sq. ft)

Balcony total area (approx): 1.67 sq m (18 sq. ft)

Dexters

St. John's Wood
4-6 St Ann's Terrace
London
NW8 6PJ
Lettings
020 7483 6330

Energy Rating: . We aim to make our particulars both accurate and reliable. However they are not guaranteed; nor do they form part of an offer or contract. If you require clarification on any points then please contact us, especially if you're traveling some distance to view. Please note that appliances and heating systems have not been tested and therefore no warranties can be given as to their good working order.

 **RICS** | Regulated
Estate Agent
and Letting Agent

[dexters.co.uk](https://www.dexters.co.uk)