



## Charlbert Street, NW8

**£530** Per week

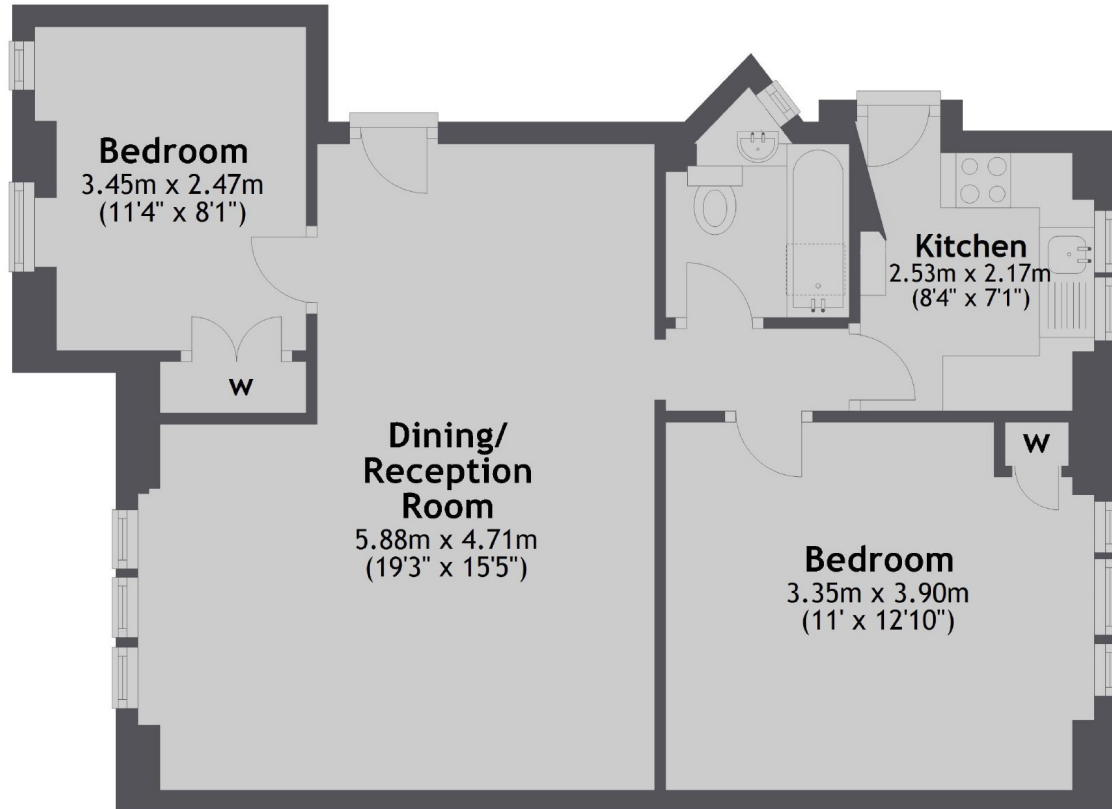
A two double bedroom apartment on the second floor of purpose built block close to Regents Park. Spacious reception/ dining room, separate kitchen and family bathroom. Access to communal garden.

Charlbert Court is located close to St Johns Wood High Street and a short walk to Regents Park and Primrose Hill.

### Features

- Two Double Bedroom
- Spacious Reception Room
- Second Floor
- Communal Garden
- Bright Apartment
- Separate Kitchen

# Charlbert Street, London, NW8



Total area: approx. 55.8 sq. metres (600.8 sq. feet)