



## Abbey Road, NW8

### £1,250,000

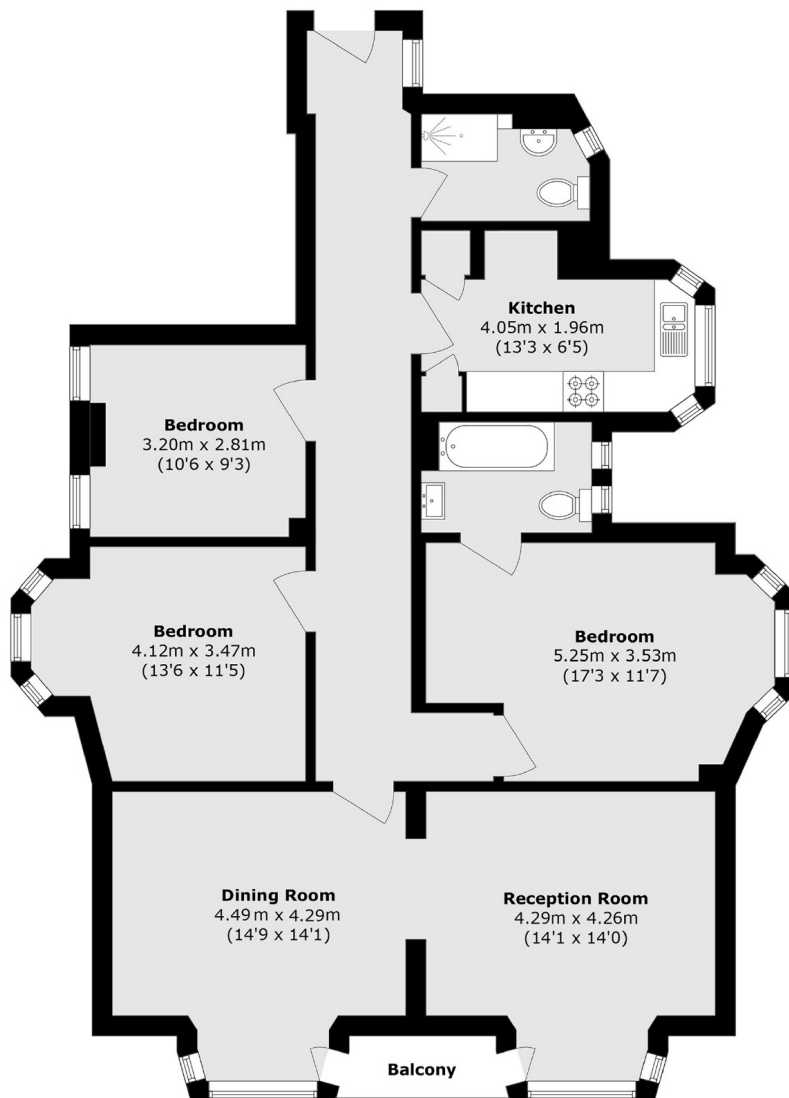
A well presented three bedroom family apartment (1271sqft/113sqm) featuring a fabulous double reception room with balcony, quietly situated to the rear of this traditional red brick mansion block located on Abbey Road.

Abbey Court is ideally located in St John's Wood, moments from Abbey Road and Regent's Park. The area offers boutique shops, cafés, and a village atmosphere. St John's Wood Underground (Jubilee Line) is just a short walk away, providing quick links to the West End and Canary Wharf.

### Features

- Three Bedrooms
- Chain Free
- Ground Floor
- Separate Kitchen
- Good Condition
- Share Of Freehold

# Abbey Road, London, NW8



Total area (approx.): 110.4 sq. m (1183.3 sq. ft)

Balcony area (approx.): 2.0 sq. m (21.5 sq. ft)

## Dexters

St. John's Wood  
4-6 St Ann's Terrace  
London  
NW8 6PJ

Sales  
020 7483 6300

Energy Rating: . We aim to make our particulars both accurate and reliable. However they are not guaranteed; nor do they form part of an offer or contract. If you require clarification on any points then please contact us, especially if you're traveling some distance to view. Please note that appliances and heating systems have not been tested and therefore no warranties can be given as to their good working order.

 **RICS** | Regulated  
Estate Agent  
and Letting Agent

[dexters.co.uk](https://www.dexters.co.uk)