



## Lisson Grove, NW8

**£738** Per week

A modern two double bedroom, two bathroom apartment in a porter block with underground parking. Spacious reception room with open plan kitchen and wood floors, two double bedrooms with built in storage, two bathrooms and good storage throughout.

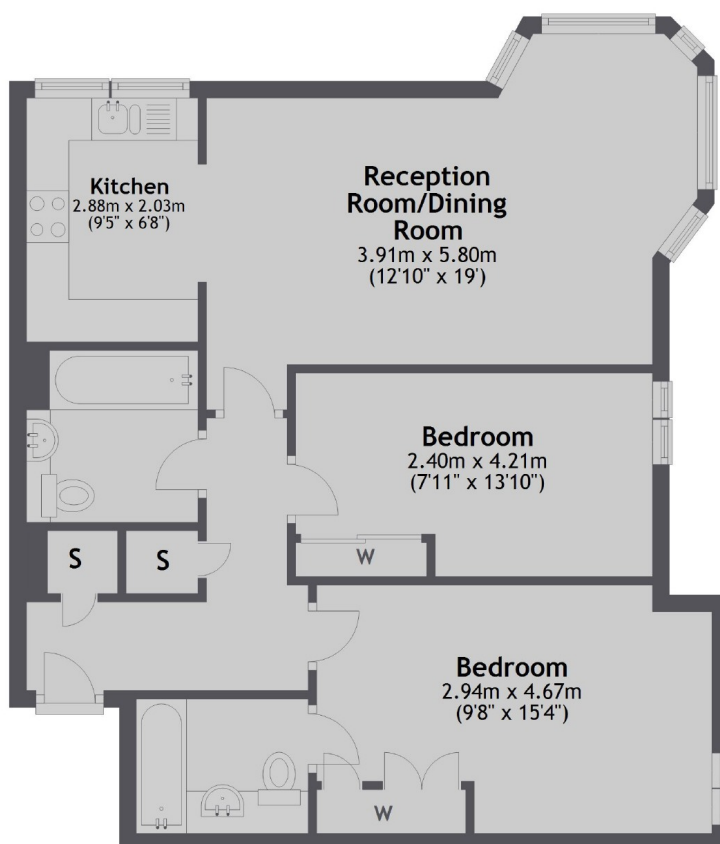
Belvedere Heights is located a short distance to local shops, restaurants and cafés on Church Street and Marylebone station.

### Features

- Two Double Bedrooms
- Two Bathrooms
- Open Plan Kitchen
- Underground Parking
- Porter Service
- Wood Floors

# Lisson Grove, London, NW8

## Fifth Floor



Total area: approx. 66.2 sq. metres (712.7 sq. feet)

# Dexters

St. John's Wood  
4-6 St Ann's Terrace  
London  
NW8 6PJ  
Lettings  
020 7483 6330

Energy Rating: D. We aim to make our particulars both accurate and reliable. However they are not guaranteed; nor do they form part of an offer or contract. If you require clarification on any points then please contact us, especially if you're traveling some distance to view. Please note that appliances and heating systems have not been tested and therefore no warranties can be given as to their good working order.

 **RICS** | Regulated  
Estate Agent  
and Letting Agent

[dexters.co.uk](https://www.dexters.co.uk)