



## Hall Road, NW8

£923 Per week

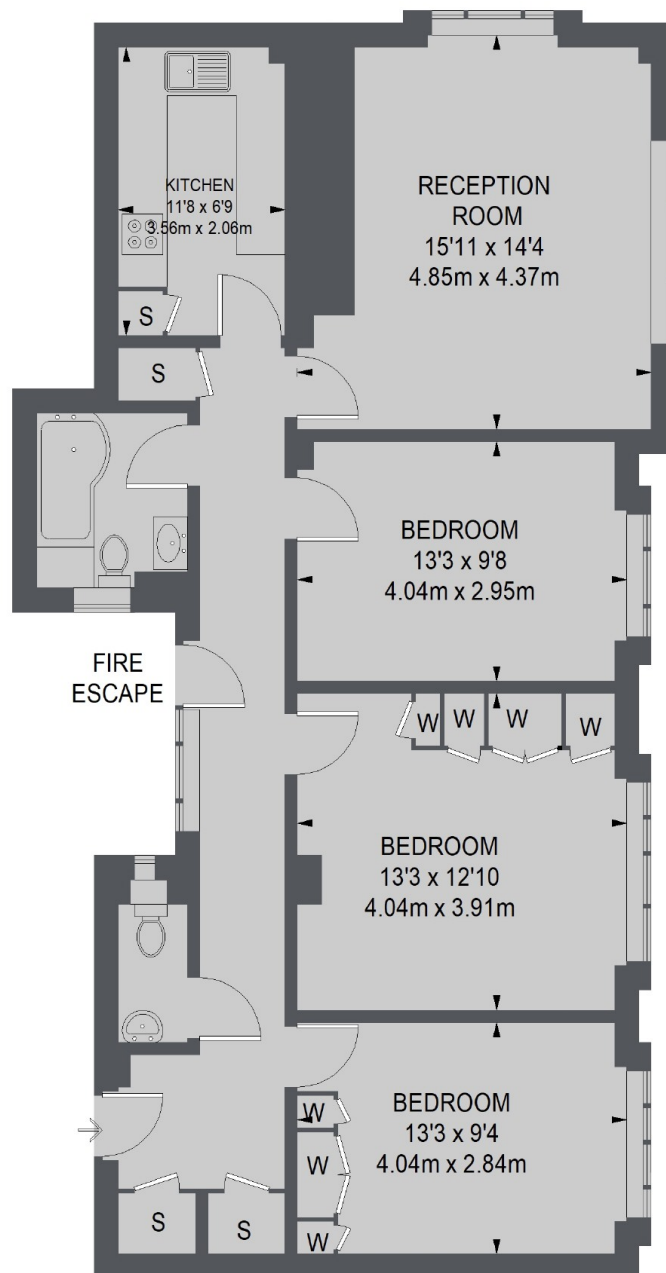
A modern three double bedroom apartment on the sixth floor in a 24 hour portered building. Spacious reception room with wood floors, separate kitchen, three good size double bedrooms, family bathroom and guest WC. Rent includes communal heating and hot water.

Grove Hall Court is located a short distance to St Johns Wood High Street and underground station.

### Features

- Three Double Bedrooms
- Separate Kitchen
- 24 Hour Porter
- Communal Heating & Hot Water
- Sixth Floor Via Lift
- Wood Floors In Reception Room

# Hall Road, London, NW8



## SIXTH FLOOR

TOTAL APPROX. FLOOR AREA  
998 SQ. FT. (92.70 SQ. M.)