



## Grove End Road, NW8

**£475** Per week

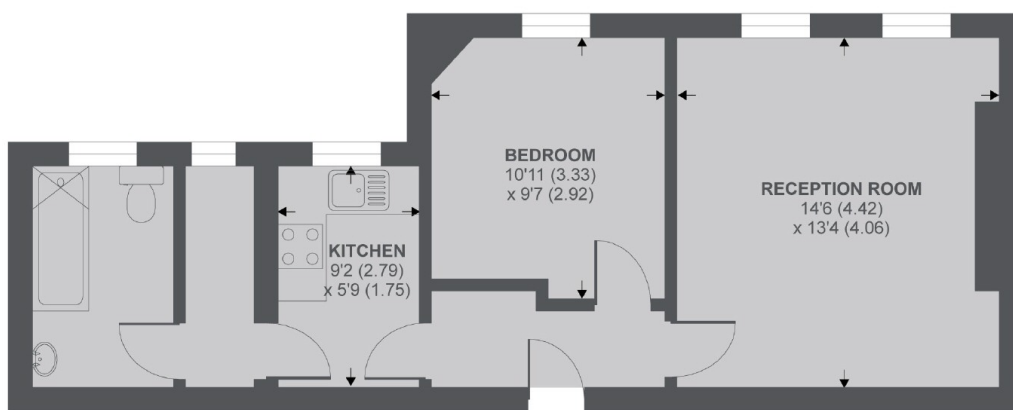
A bright and spacious one bedroom apartment on the third floor of this well-maintained portered building in the heart of St John's Wood. The property is quietly positioned at the rear of the building and features a generous living and dining room with two sash windows overlooking the communal gardens, a separate fitted kitchen, a double bedroom with ample storage, and a bathroom with shower over bath.

Perfectly positioned on Grove End Road, Addison House is only a short stroll from St John's Wood High Street and Underground Station, with a superb selection of boutiques, cafés and restaurants close by, and Regent's Park and Primrose Hill also within easy reach.

### Features

- One Double Bedroom
- Third Floor With Lift
- Day Porter
- Communal Garden
- Hot Water Included
- Separate Kitchen

# Grove End Road, London, NW8



3rd Floor

APPROX FLOOR AREA 492 SQ.FT 45.7 SQ.M  
Copyright nichecom.co.uk 2019 REF : 534932

## Dexters

St. John's Wood  
4-6 St Ann's Terrace  
London  
NW8 6PJ  
Lettings  
020 7483 6330

Energy Rating: C. We aim to make our particulars both accurate and reliable. However they are not guaranteed; nor do they form part of an offer or contract. If you require clarification on any points then please contact us, especially if you're traveling some distance to view. Please note that appliances and heating systems have not been tested and therefore no warranties can be given as to their good working order.

 **RICS** | Regulated  
Estate Agent  
and Letting Agent

dexters.co.uk