



## Grove End Road, NW8

£761 Per week

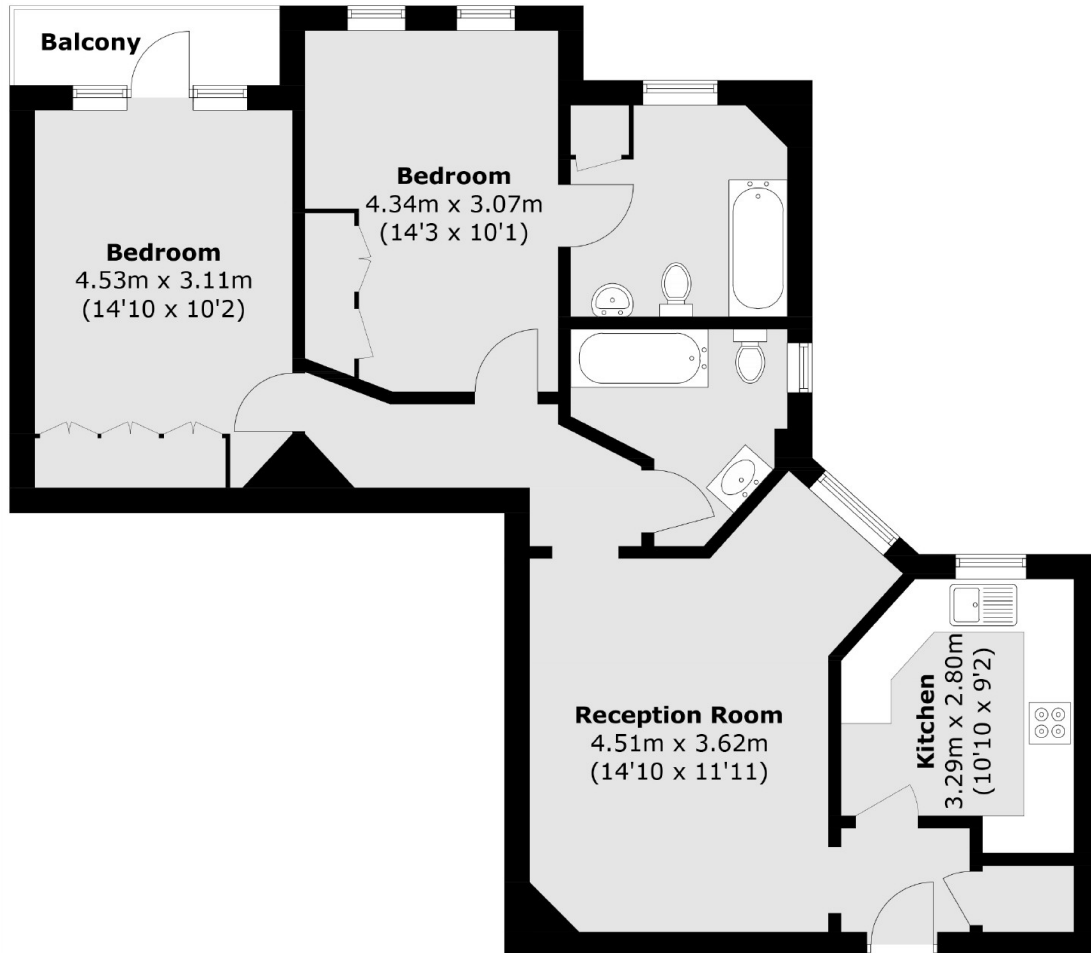
A spacious two bedroom, two bathroom apartment on the fourth floor in a portered block. Bright reception room, separate kitchen, master bedroom with a balcony and en suite bathroom, second double bedroom and family bathroom. Communal hot water included in rent. Communal garden to the rear of the building.

Addison House is location a short distance from Lords Cricket Ground and local shops and restaurants on St Johns Wood High Street. Regents Park is also a short walk away.

### Features

- Two Double Bedrooms
- Two Bathrooms
- Separate Kitchen
- Fourth Floor
- Balcony
- Communal Garden

# Grove End Road, London, NW8



Total area (approx.): 76.7 sq. m (825.6 sq. ft)  
Balcony : 2.9 sq. m (31.2 sq. ft)