



Abbey Road, NW8

£560,000

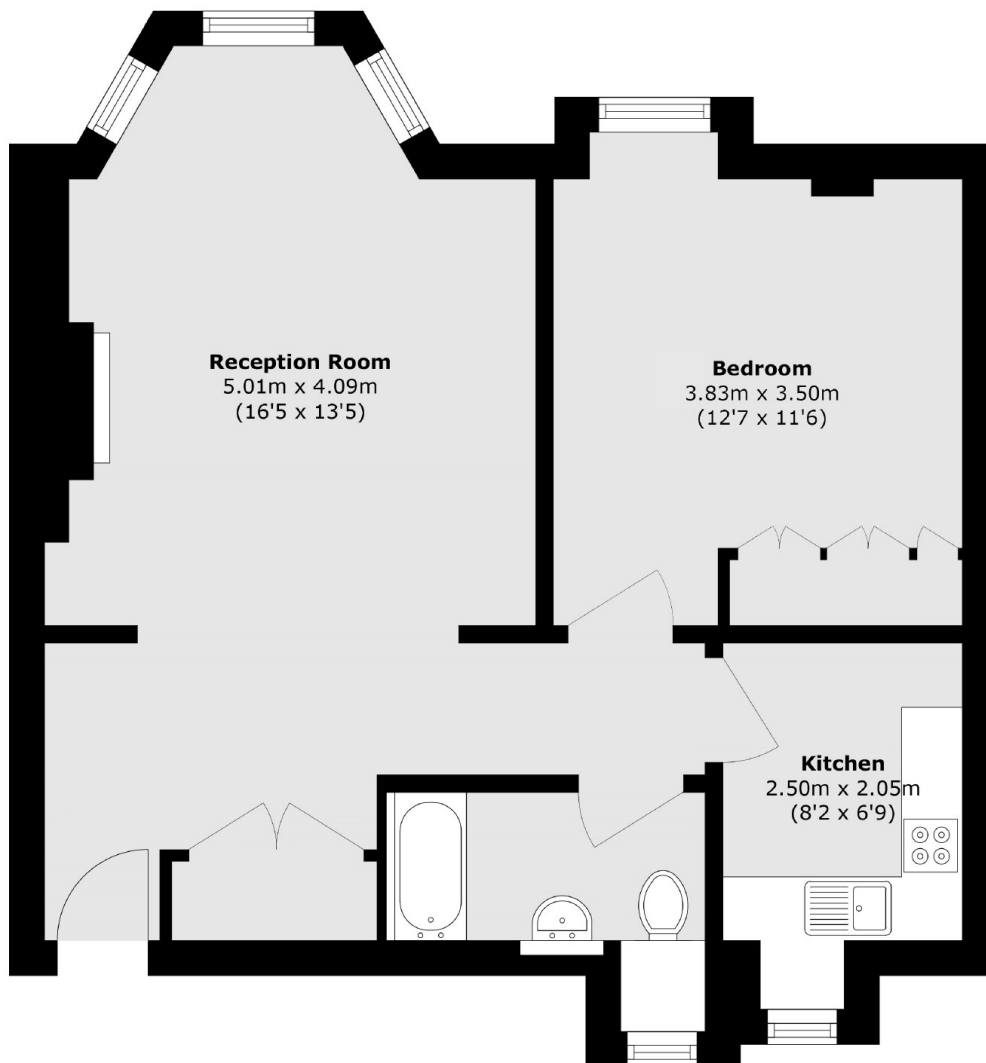
A well-presented, spacious one bedroom apartment, located within this attractive mansion block, close to the popular Abbey Road Studios. The property is in turn-key condition and has a spacious reception room, separate kitchen, large double bedroom and bathroom. The building also benefits from a well maintained communal garden.

Adelaide Court is moments from the amenities of Abbey Road, St John's Wood tube station is only 0.3 miles away as are the high street cafe's, shops and restaurants. Situated 0.3 miles from the fashionable St John's Wood High Street with its array of boutique's and eateries.

Features

- One Bedroom Apartment
- Communal Garden
- Separate Kitchen
- Great Condition
- Chain-Free
- Good Location

Abbey Road, London, NW8



Total area (approx.): 55.1 sq. m (593.0 sq. ft)

Dexters

St. John's Wood
4-6 St Ann's Terrace
London
NW8 6PJ
Sales
020 7483 6300

Energy Rating: . We aim to make our particulars both accurate and reliable. However they are not guaranteed; nor do they form part of an offer or contract. If you require clarification on any points then please contact us, especially if you're traveling some distance to view. Please note that appliances and heating systems have not been tested and therefore no warranties can be given as to their good working order.

 **RICS** | Regulated
Estate Agent
and Letting Agent

[dexters.co.uk](https://www.dexters.co.uk)