

St. Edmunds Terrace, NW8

£715 Per week

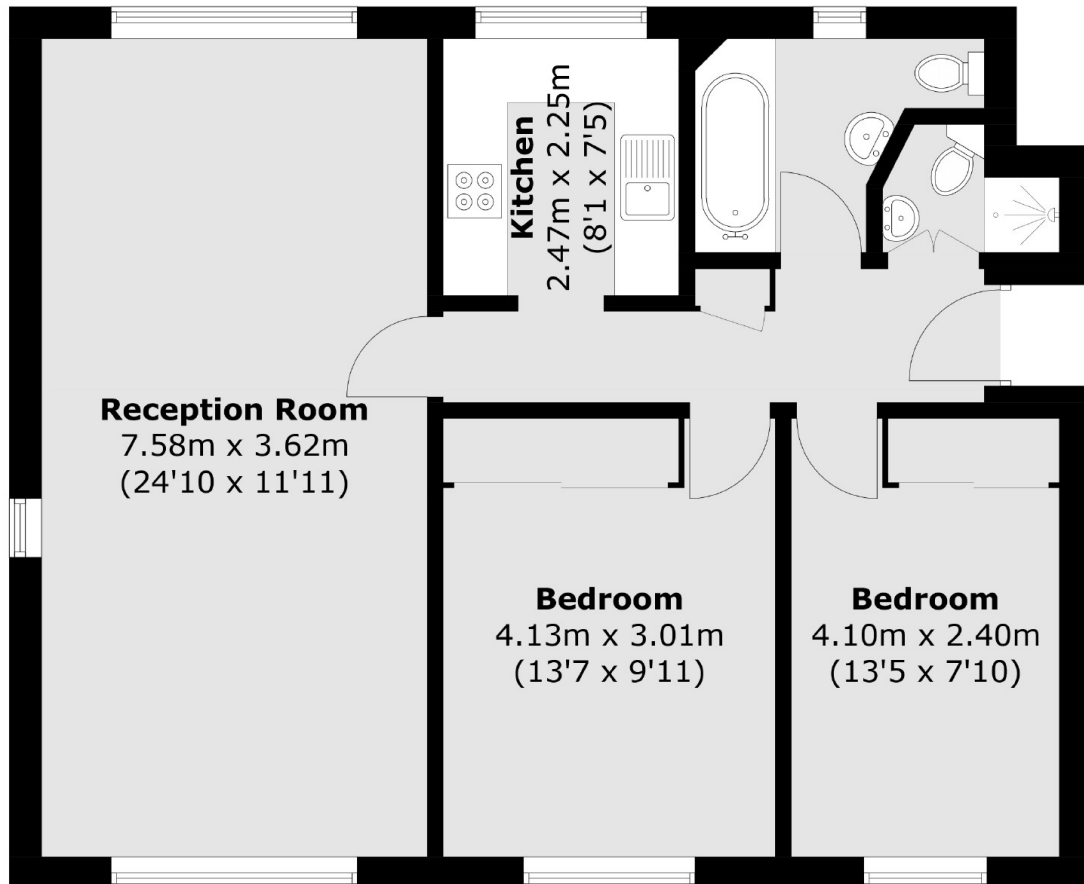
Modern two double bedroom apartment on fifth floor of a purpose built block close to Primrose Hill and Regents Park. Spacious reception room, separate kitchen and two bathrooms. The property benefits from triple aspect views including scenes of Regents Park and Primrose Hill.

Barrie House is located close to Primrose Hill and Regents Park. Roughly 10 minutes walk to St Johns Wood tube station.

Features

- Two Double Bedrooms
- Two Bathrooms
- Wood Floors Throughout
- Communal Heating and Hot Water Included
- Fifth Floor Via Lift
- Recently Refurbished

St. Edmunds Terrace,
London, NW8



Total area (approx.): 70.8 sq. m (762.1 sq. ft)