



Mortimer Crescent, NW6

£345,000

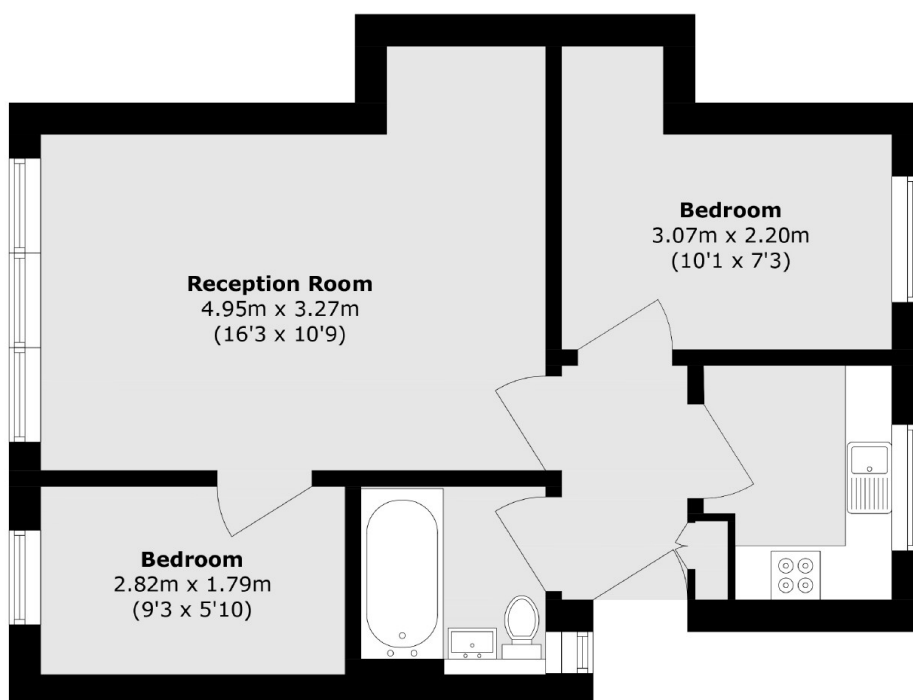
A chain free, two bedroom apartment set within this historic Neo-Tudor building. The property has separate kitchen and reception rooms. Communal hot water and heating is included in the service charge.

Hillsborough Court is within a quiet residential area, 0.5 miles to Kilburn Park underground station (Bakerloo line) and Kilburn High Road station (Overground).

Features

- Chain Free
- Long Lease
- Two Bedrooms
- Heating Included
- Lift Access
- Communal Garden

Mortimer Crescent, London, NW6



Total area (approx.): 41.5 sq. m (446.7 sq. ft)

Dexters

St. John's Wood
4-6 St Ann's Terrace
London
NW8 6PJ
Sales
020 7483 6300

Energy Rating: . We aim to make our particulars both accurate and reliable. However they are not guaranteed; nor do they form part of an offer or contract. If you require clarification on any points then please contact us, especially if you're traveling some distance to view. Please note that appliances and heating systems have not been tested and therefore no warranties can be given as to their good working order.

 **RICS** | Regulated
Estate Agent
and Letting Agent

[dexters.co.uk](https://www.dexters.co.uk)