

St. Johns Wood Park, NW8

£738 Per week

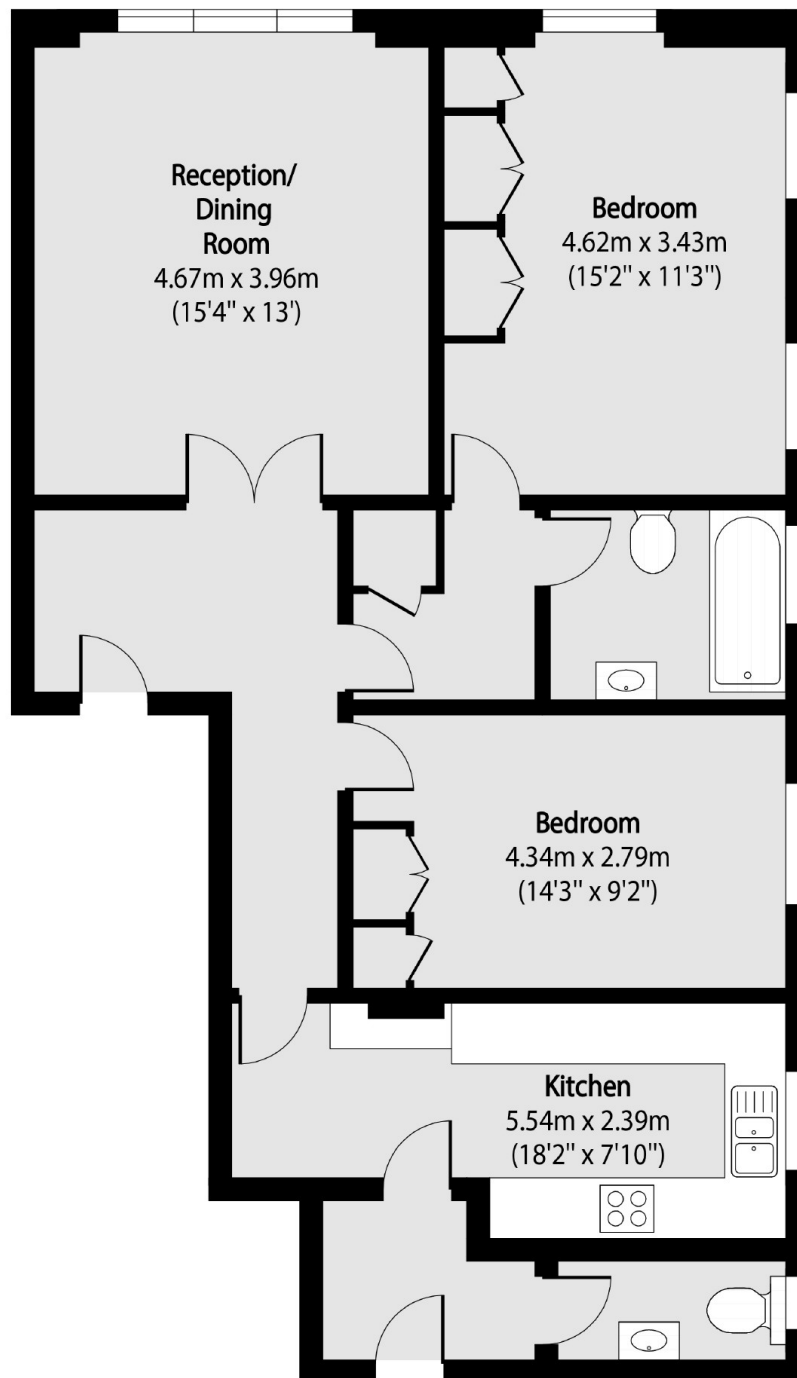
A bright two double bedroom apartment in this popular mansion block close to Primrose Hill, The property benefits from a large reception room and separate kitchen. Heating and hot water are included.

Park Lodge is around 315 metres to Swiss Cottage Underground Station (Jubilee Line) and 640 metres to South Hampstead Overground. Just half half a mile away to the south are the popular St. Johns Wood restaurants and shops. The same distance to the southeast is Primrose Hill which leads on to Regents Park.

Features

- Two Double Bedrooms
- Separate Kitchen
- Lift Access and Porter
- Top Floor (3rd)
- Communal Gardens
- Primrose Hill

St. Johns Wood Park, London, NW8



Total area (approx): 84.0 sq m (904 sq. ft)