



Garden Road, NW8

£500,000

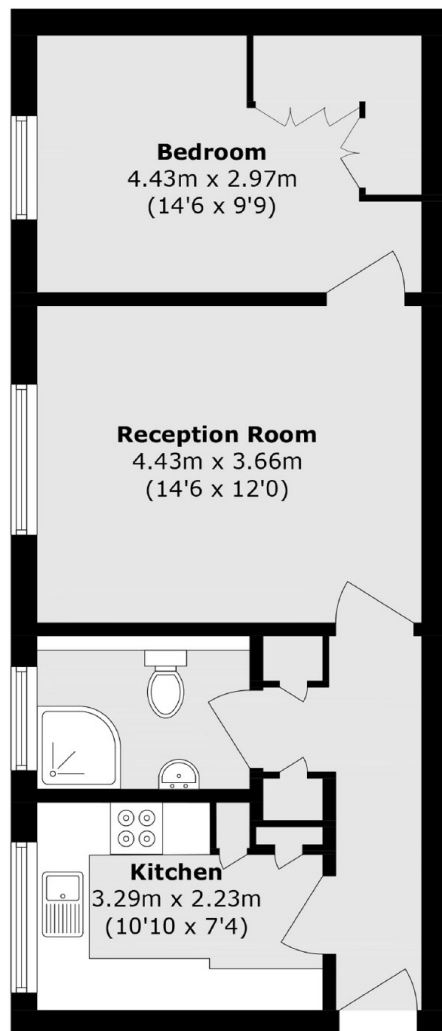
A spacious one bedroom apartment in a popular mansion block located a short distance from St John's Wood tube station. Good size reception room with wood floors, separate kitchen with integrated appliances including a dishwasher and great storage throughout.

Garden Court is located on Garden Road which is under 500 metres to St John's Wood tube station and local shops, cafés and restaurants on the High Street.

Features

- Chain Free
- One Double Bedroom
- Communal Garden
- Caretaker
- Heating & Hot Water Included
- Wood Floors Throughout

Garden Road, London, NW8



Total area (approx.): 49.8 sq. m (536.0 sq. ft)