



Finchley Road, NW8

£1,400,000

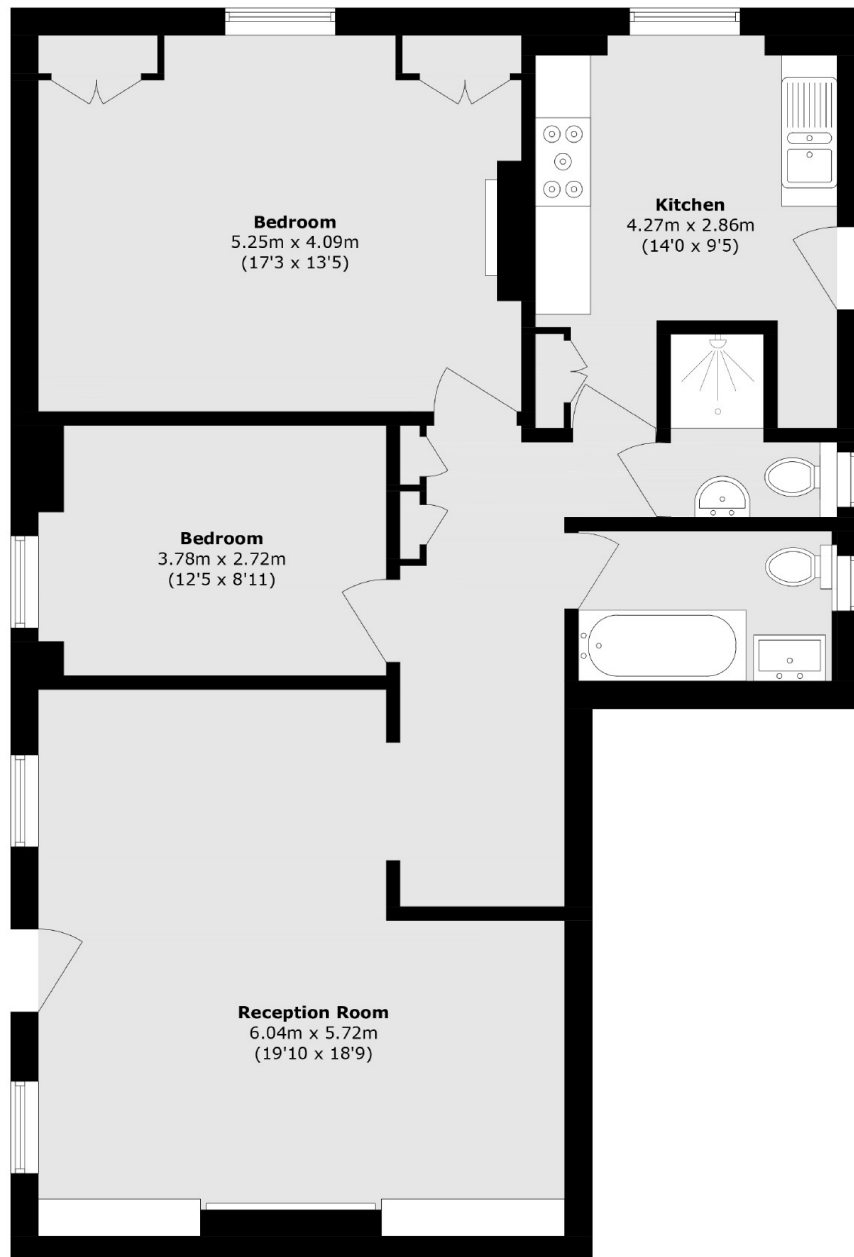
A generously proportioned two double bedroom apartment spanning approximately 1,050 sq ft, featuring high ceilings, wood flooring, two bathrooms, and a separate kitchen. Offered chain free with a share of freehold.

Located in the heart of St John's Wood, Eyre Court is a well-maintained portered building just moments from the high street and Regent's Park. Excellent transport links via St John's Wood Station (Jubilee Line).

Features

- Two Double Bedrooms
- Chain Free
- Share of Freehold
- Two Bathrooms
- Separate Kitchen
- Excellent Location

Finchley Road,
London, NW8



Second Floor

Total area (approx.): 95.4 sq. m (1026.8 sq. ft)

Dexters

St. John's Wood
4-6 St Ann's Terrace
London
NW8 6PJ
Sales
020 7483 6300

Energy Rating: C. We aim to make our particulars both accurate and reliable. However they are not guaranteed; nor do they form part of an offer or contract. If you require clarification on any points then please contact us, especially if you're traveling some distance to view. Please note that appliances and heating systems have not been tested and therefore no warranties can be given as to their good working order.

 **RICS** | Regulated
Estate Agent
and Letting Agent

dexters.co.uk