



Hamilton Terrace, NW8

£700,000

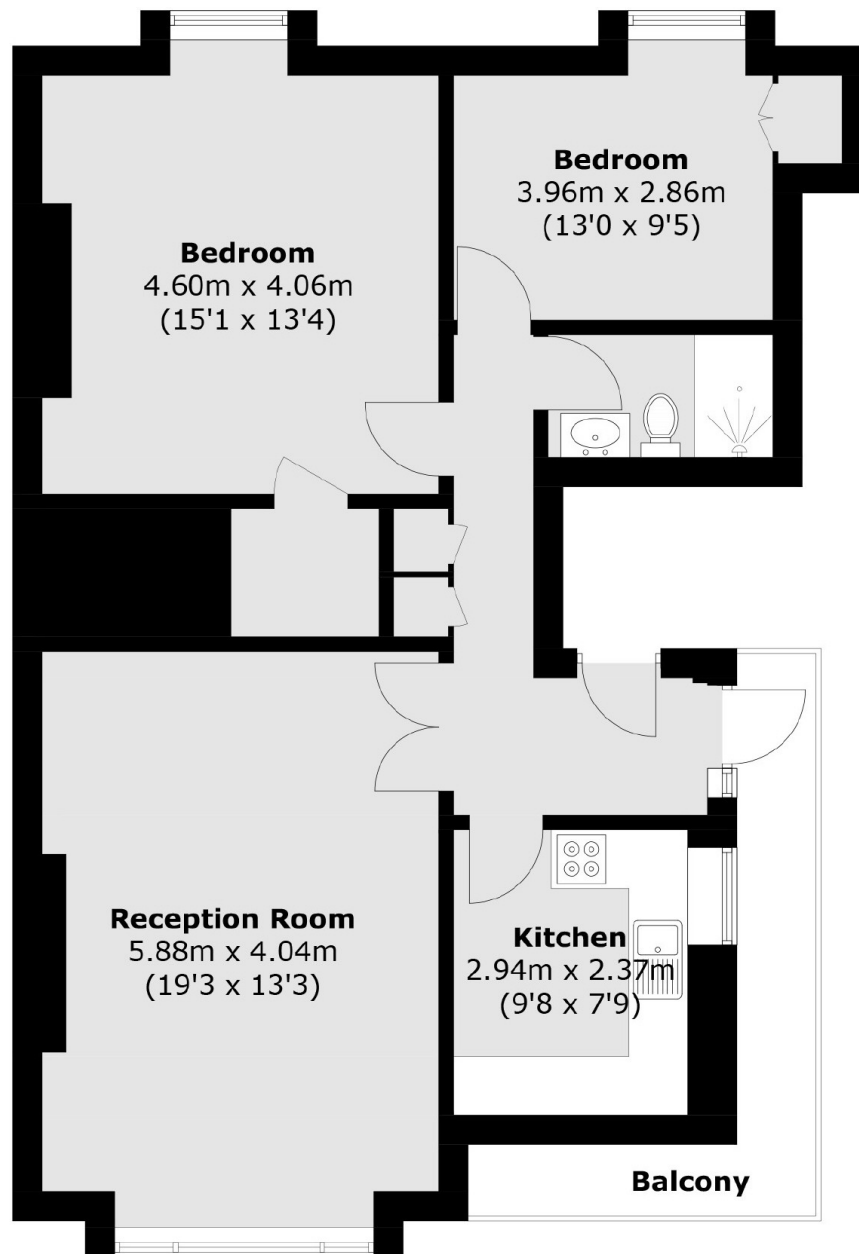
A bright and charming two bedroom period conversion on the third floor, featuring a spacious 19' reception room, separate kitchen, and private balcony. A lovely mix of character and comfortable living.

Hamilton Terrace is an expansive, tree lined road, and is conveniently located for the shops, cafés and transport facilities of both St John's Wood (Jubilee Line) and Maida Vale (Bakerloo Line).

Features

- Two Bedrooms
- Balcony
- Separate Kitchen
- Excellent Location
- Leasehold
- Chain Free

Hamilton Terrace, London, NW8



Third Floor

Total area (approx.): 75.8 sq. m (815.9 sq. ft)
Balcony area (approx.): 6.6 sq. m (71.0 sq. ft)

Dexters

St. John's Wood
4-6 St Ann's Terrace
London
NW8 6PJ
Sales
020 7483 6300

Energy Rating: F. We aim to make our particulars both accurate and reliable. However they are not guaranteed; nor do they form part of an offer or contract. If you require clarification on any points then please contact us, especially if you're traveling some distance to view. Please note that appliances and heating systems have not been tested and therefore no warranties can be given as to their good working order.

 **RICS** | Regulated
Estate Agent
and Letting Agent

[dexters.co.uk](https://www.dexters.co.uk)