



Abercorn Place, NW8

£1,050,000

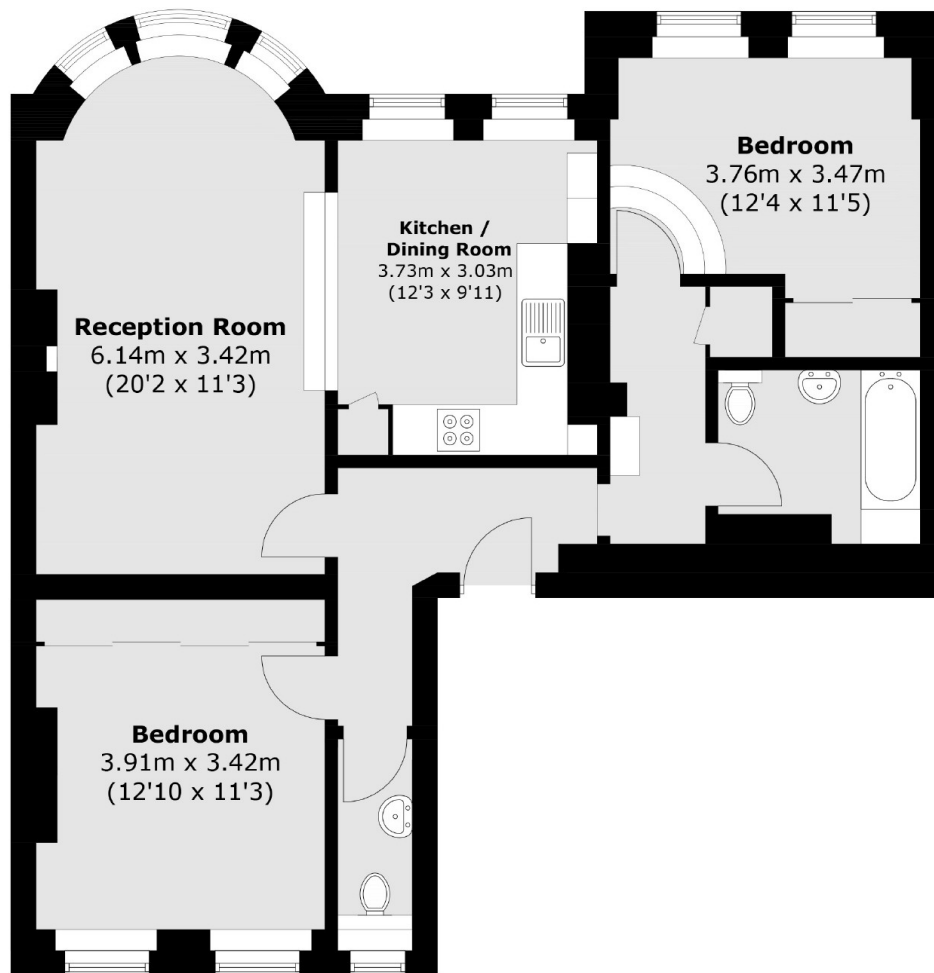
Spacious two-bedroom apartment set within a well-maintained purpose-built block, offering approximately 900 sq ft of living space. This extremely bright property features high ceilings, a large reception room, separate kitchen, one bathroom, and an additional guest WC.

Situated on a sought-after residential street in St John's Wood, just moments from Abbey Road and the High Street's shops and cafés. Conveniently located near St John's Wood (Jubilee Line) and Maida Vale (Bakerloo Line) stations, with easy access to Regent's Park and central London.

Features

- Two Double Bedrooms
- High Ceilings
- Extremely Bright
- Chain Free
- Share of Freehold
- Guest WC

Abercorn Place, London, NW8



Total area (approx.): 82.1 sq. m (883.7 sq. ft)

Dexters

St. John's Wood
4-6 St Ann's Terrace
London
NW8 6PJ
Sales
020 7483 6300

Energy Rating: C. We aim to make our particulars both accurate and reliable. However they are not guaranteed; nor do they form part of an offer or contract. If you require clarification on any points then please contact us, especially if you're traveling some distance to view. Please note that appliances and heating systems have not been tested and therefore no warranties can be given as to their good working order.

 **RICS** | Regulated
Estate Agent
and Letting Agent

[dexters.co.uk](https://www.dexters.co.uk)