



King Henrys Road, NW3

£553 Per week

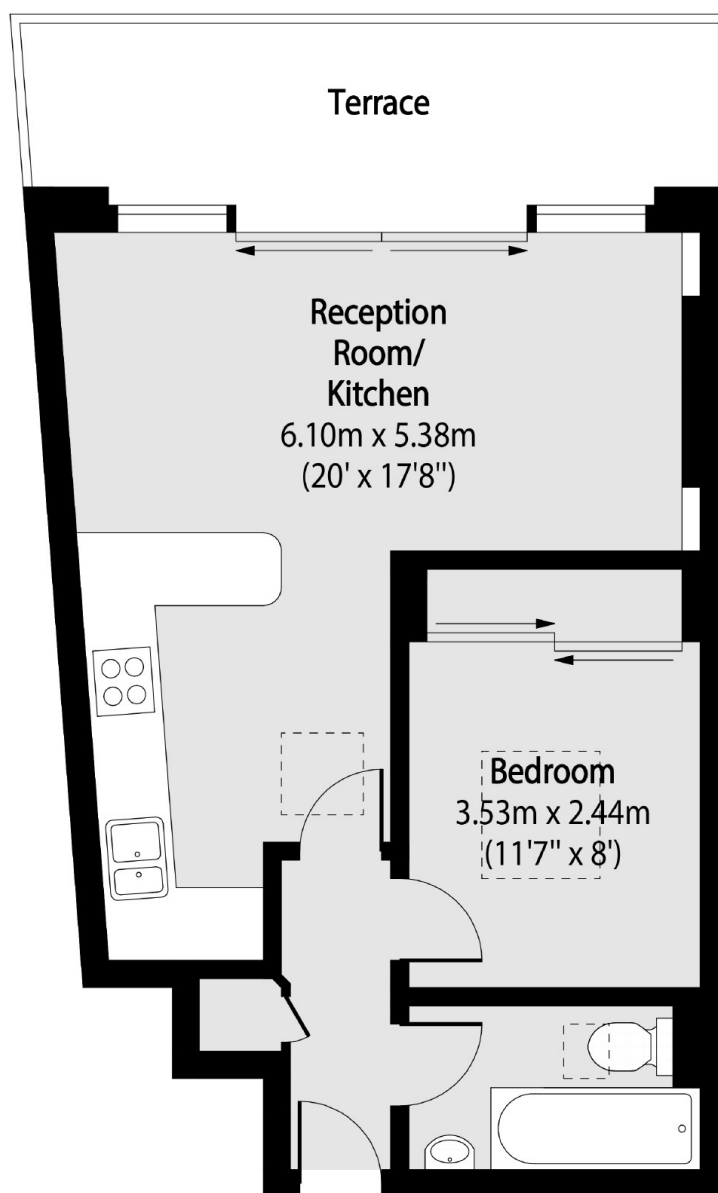
A one bedroom flat with balcony set on the third floor (walk-up) of a converted Victorian building located on the junction of King Henry's Road with Regent's Park Road.

Located on the corner of King Henry's Road with Regent's Park Road it is ideally located for the shops and cafés of Primrose Hill and a short walk across the bridge to Chalk Farm underground.

Features

- Large Balcony
- One Bedroom
- Primrose Hill
- Excellent Location
- Open Plan
- Bright

King Henrys Road,
London, NW3



Total area (approx): 38.18 sq m (411 sq. ft)

Terrace total area (approx): 8.64 sq m (93 sq. ft)

Dexters

St. John's Wood
4-6 St Ann's Terrace
London
NW8 6PJ
Lettings
020 7483 6330

Energy Rating: D. We aim to make our particulars both accurate and reliable. However they are not guaranteed; nor do they form part of an offer or contract. If you require clarification on any points then please contact us, especially if you're traveling some distance to view. Please note that appliances and heating systems have not been tested and therefore no warranties can be given as to their good working order.

 **RICS** | Regulated
Estate Agent
and Letting Agent

dexters.co.uk