



## St. Johns Wood Park, NW8

### £1,000,000

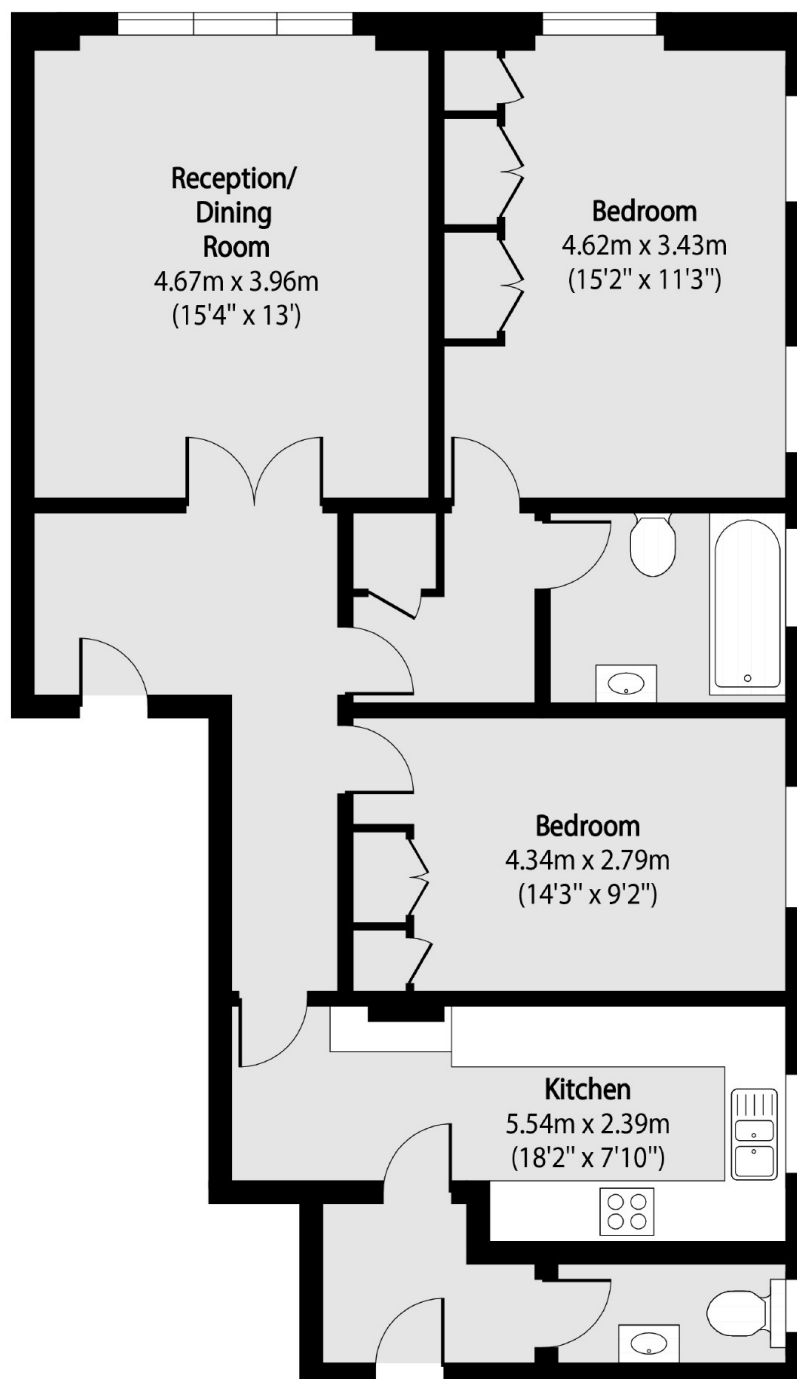
A bright two double bedroom, share of freehold apartment in this popular mansion block close to Primrose Hill, The property benefits from a large reception room and separate kitchen. Heating and hot water are included in the service charge and a reserve fund is in place. There is an extra storage room in the basement and off street parking comes on a first come, first served basis. The building comes with a communal garden to the rear, is serviced by a lift and comes with a porter.

Park Lodge is around 315 metres to Swiss Cottage Underground Station (Jubilee Line) and 640 metres to South Hampstead Overground. Just half a mile away to the south are the popular St. Johns Wood restaurants and shops. The same distance to the southeast is Primrose Hill which leads on to Regents Park.

### Features

- Chain Free
- Share Of Freehold
- Two Double Bedrooms
- Lift Access and Porter
- Top Floor (3rd)
- Communal Gardens
- Primrose Hill

St. Johns Wood Park,  
London, NW8



Total area (approx): 84.0 sq m (904 sq. ft)