



Abbey Road, NW8

£461 Per week

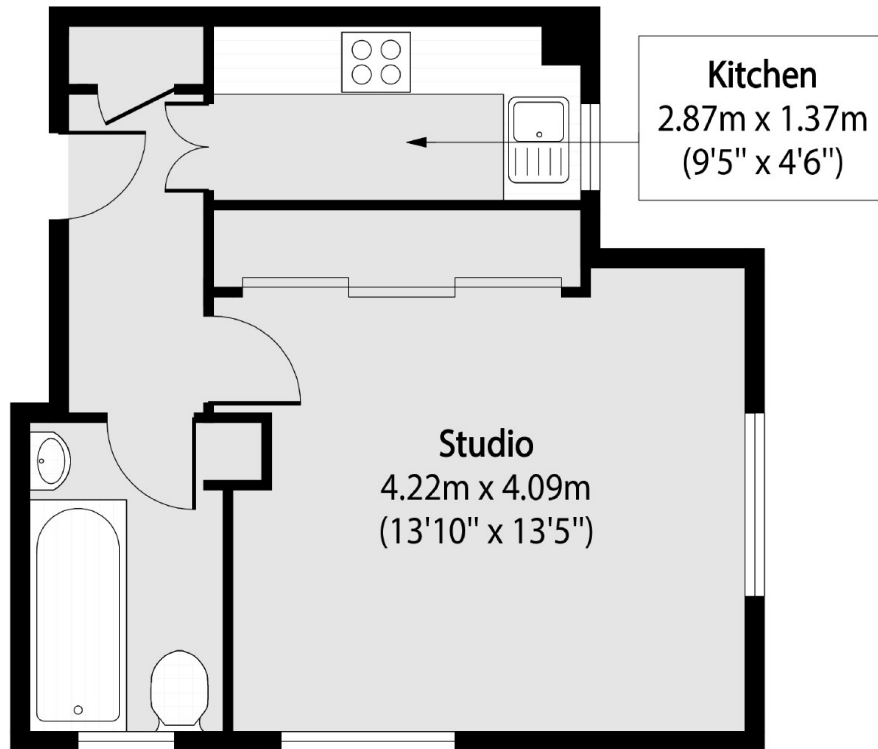
A studio apartment on the fifth floor of a portered block close to St Johns Wood station. Bright studio room with built in storage and separate kitchen and bathroom. Communal heating and hot water included in the rent.

Langford Court is located a short walk to St. John's Wood underground station and close to St Johns Wood High Street.

Features

Studio Apartment
Fifth Floor Via Lift
Day Porter
Communal Heating and Hot
Water Included

Abbey Road,
London, NW8



Total area (approx): 27.87 sq m (300 sq. ft)