



## Greville Road, NW6

£700,000

A recently refurbished three bedroom split-level apartment on the first and second floors of this Georgian conversion. The property has a spacious reception with wooden flooring, a semi-open plan kitchen, two bathrooms and a WC.

Greville Road is conveniently located by both St John's Wood station (Jubilee line) and St John's Wood high street, which has an excellent selection of independent shops, cafés and restaurants.

### Features

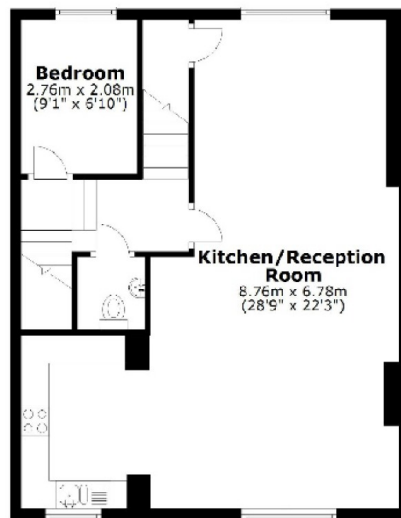
- Chain Free
- Three Bedroom
- Two Bathrooms
- Split-Level
- Long Lease
- Georgian Conversion

Greville Road,  
London, NW6

**Ground Floor**



**First Floor**



**Second Floor**



Total area: approx. 101.3 sq. metres (1090.8 sq. feet)

**Dexters**

St. John's Wood  
4-6 St Ann's Terrace  
London  
NW8 6PJ  
Sales  
020 7483 6300

Energy Rating: D. We aim to make our particulars both accurate and reliable. However they are not guaranteed; nor do they form part of an offer or contract. If you require clarification on any points then please contact us, especially if you're traveling some distance to view. Please note that appliances and heating systems have not been tested and therefore no warranties can be given as to their good working order.

 **RICS** | Regulated  
Estate Agent  
and Letting Agent

[dexters.co.uk](http://dexters.co.uk)