

## Grove End Road, NW8

£553 Per week

A one bedroom apartment in a portered block. Open plan kitchen reception, double bedroom with large wardrobes and modern bathroom with walk in shower. Wood floors throughout and communal heating and hot water included within the rent.

Ascot Court is located a short distance from St Johns Wood Underground Station (Jubilee Line) and all local shops, cafés and restaurants on St Johns Wood High Street.

### Features

- One Double Bedroom
- Portered Block
- Open Plan Kitchen
- Wood Floor Throughout
- Communal Heating and Hot Water

# Grove End Road, London, NW8

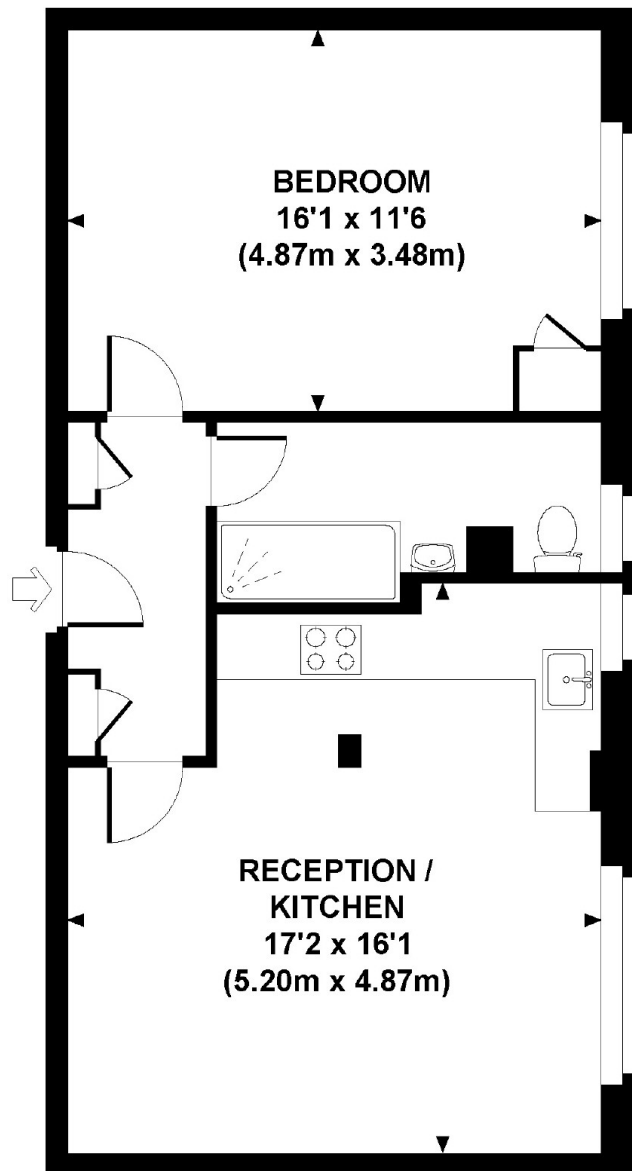
## ASCOT COURT, GROVE END ROAD, NW8

Approx. gross internal area

537 Sq Ft. / 49.9 Sq M.

Representation of current layout

Not to scale.



FIRST FLOOR