



North Bank, NW8

£634 Per week

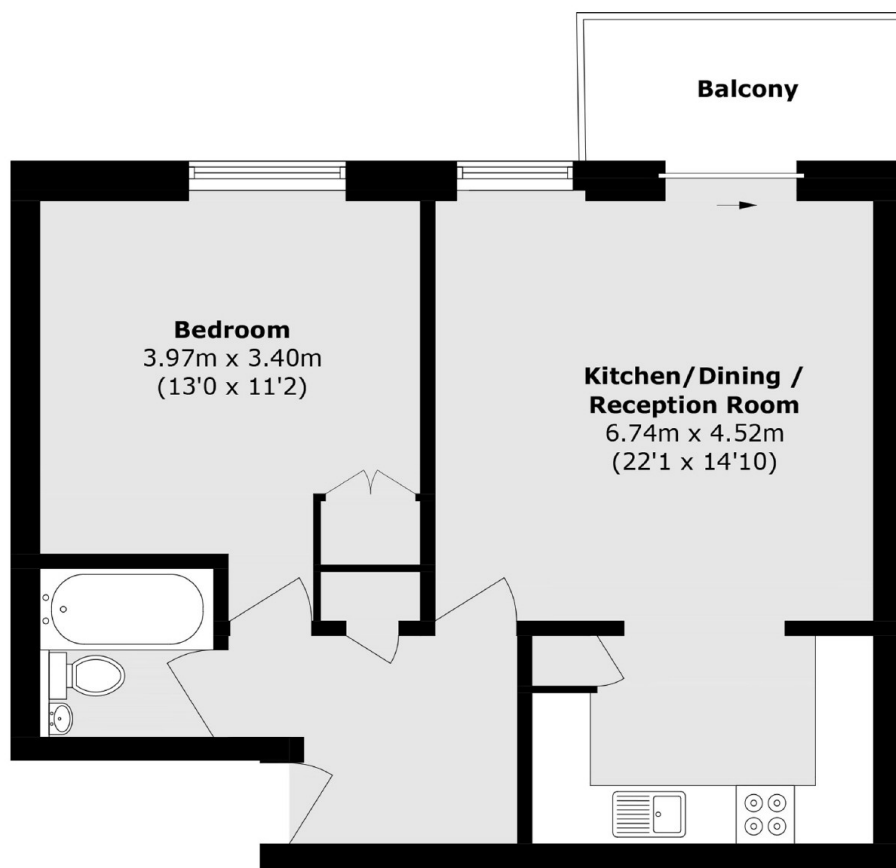
A spacious one bedroom apartment in a portered building in St John's Wood. Bright reception room with balcony, separate kitchen, double bedroom and bathroom. The block has a gym and communal garden for all residents.

Regent Court is located close to Regents Park and Lords Cricket Ground.

Features

- One Bedroom
- One Bathroom
- Separate Kitchen
- 24 Hour Porter
- Communal Gardens and Gym
- Lift

North Bank, London, NW8



Total area (approx.): 53.8 sq. m (579.1 sq. ft)

Balcony area (approx.): 4.8 sq. m (51.7 sq. ft)