



Finchley Road, NW8

£611 Per week

A modern two bedroom apartment on the second floor of a purpose built block. Bright reception room with wood floors, modern open plan kitchen, double master bedroom with built in storage, second single bedroom or study and shower room.

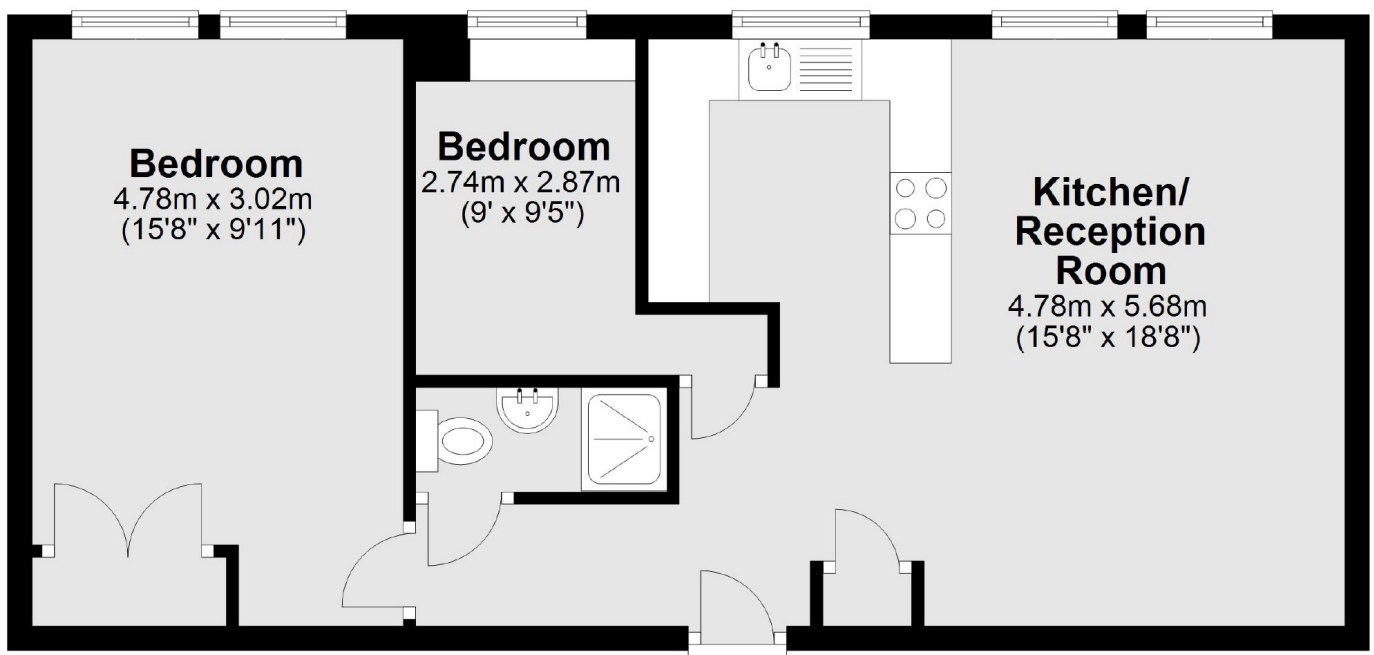
Athena Court is located next to St Johns Wood underground station and a short distance from St Johns Wood High Street and the open green space of Regents Park.

Features

Recently Refurbished
Two Bedroom Apartment
Wood Floors In Reception
Second Floor
Lift
Excellent Location

Finchley Road,
London, NW8

Second Floor



Total area: approx. 51.2 sq. metres (550.7 sq. feet)