



## Hamilton Terrace, NW8

### £1,100,000

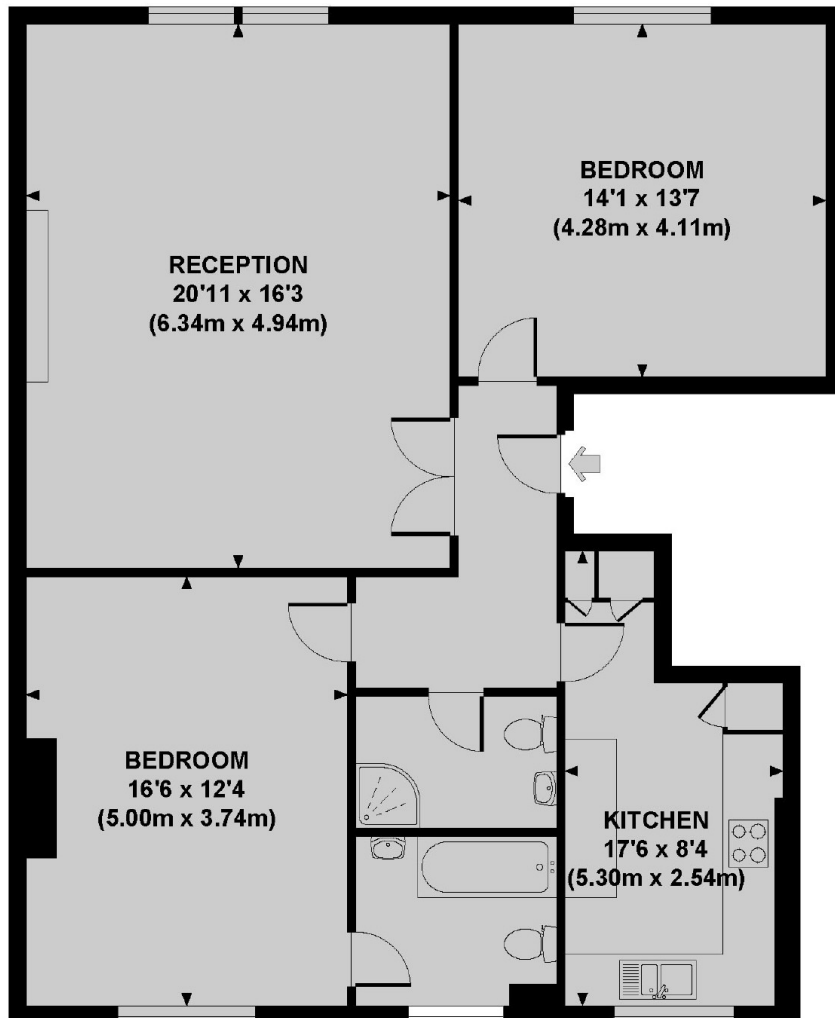
A modern two bedroom, two bathroom apartment on the third floor of a period conversion. Located on a popular residential street with a spacious reception room, separate kitchen, principle bedroom with en-suite bathroom, second double bedroom and family bathroom.

Hamilton Terrace is a quiet residential street located between Maida Vale and St Johns Wood giving resident great transport links into the city and local amenities.

### Features

- Chain Free
- Two Double Bedrooms
- Two Bathrooms
- Spacious Reception Room
- Separate Kitchen
- Great Location

# Hamilton Terrace, London, NW8



**THIRD FLOOR**

## **HAMILTON TERRACE, NW8**

Approx. gross internal area  
1026 Sq Ft. / 95.3 Sq M.

# Dexters

St. John's Wood  
4-6 St Ann's Terrace  
London  
NW8 6PJ  
Sales  
020 7483 6300

Energy Rating: D. We aim to make our particulars both accurate and reliable. However they are not guaranteed; nor do they form part of an offer or contract. If you require clarification on any points then please contact us, especially if you're traveling some distance to view. Please note that appliances and heating systems have not been tested and therefore no warranties can be given as to their good working order.

 **RICS** | Regulated  
Estate Agent  
and Letting Agent

[dexters.co.uk](http://dexters.co.uk)