



## Grove End Road, NW8

£623 Per week

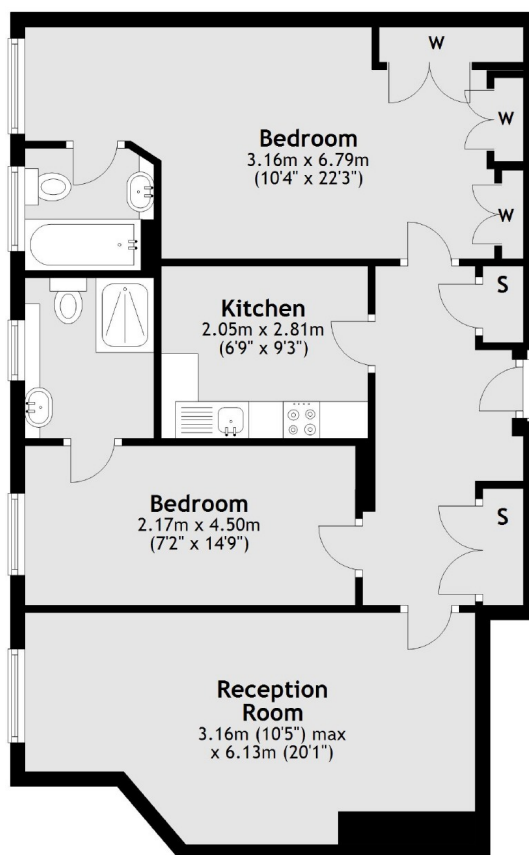
A spacious two bedroom, two bathroom apartment on the first floor of a portered block. Bright reception room, separate kitchen and two double bedrooms with en suite bathrooms. Residents have access to well maintained communal gardens.

Addison House is located a short distance from local shops, restaurants and cafés on St Johns Wood High Street and underground station.

### Features

- Two Double Bedrooms
- Two Bathrooms
- First Floor Apartment
- Communal Garden
- Separate Kitchen
- Day Porter

# Grove End Road, London, NW8



**First Floor**

Total area: approx. 70.6 sq. metres (760.4 sq. feet)