



Dumpton Place, NW1

£1,700 Per week

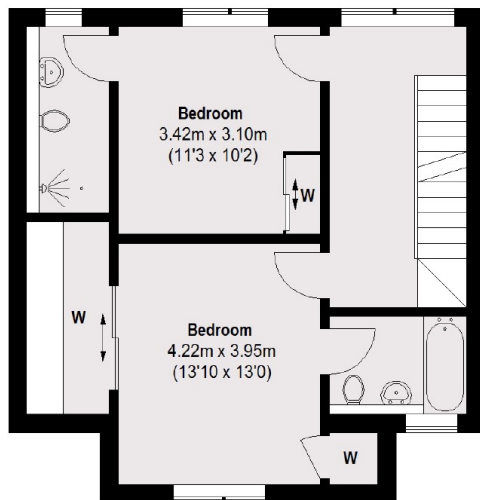
A modern four bedroom, four bathroom house arrange over four floors with two private terraces and off street parking for two cars.

Whittlebury Mews is located a short distance to the open green spaces of Primrose Hill and a large range of local shops, cafés and restaurants on Regent Park Road.

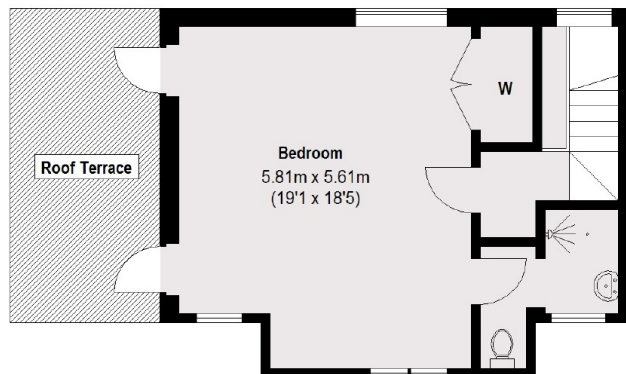
Features

- Four Bedroom House
- Four Bathrooms
- Arranged Over Four Floors
- Parking For Two Cars
- Two Terraces
- Sauna

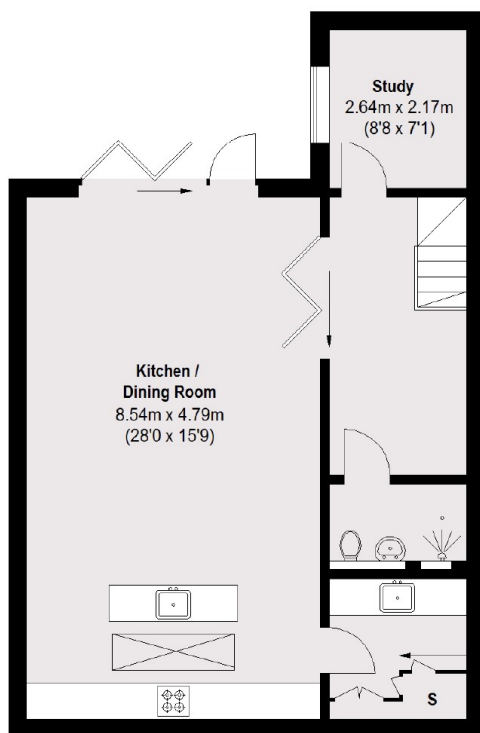
Dumpton Place, London, NW1



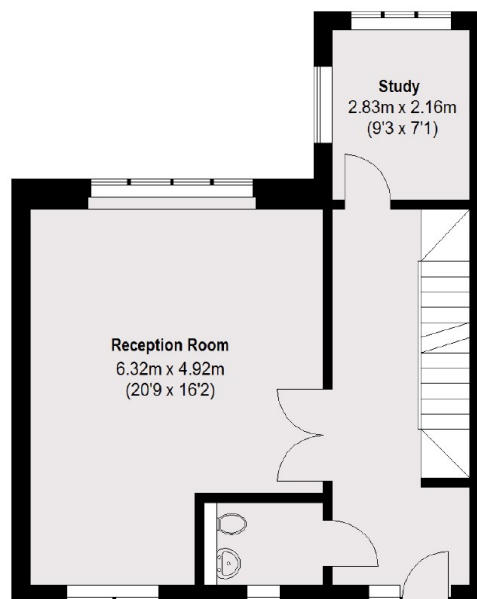
First Floor



Second Floor



Lower Ground Floor



Ground Floor

Total area (approx.): 208.99 sq. m (2250 sq. ft)
Roof Terrace: 12.62 sq. m (136 sq. ft)

Dexters

St. John's Wood
4-6 St Ann's Terrace
London
NW8 6PJ
Lettings
020 7483 6330

Energy Rating: A. We aim to make our particulars both accurate and reliable. However they are not guaranteed; nor do they form part of an offer or contract. If you require clarification on any points then please contact us, especially if you're traveling some distance to view. Please note that appliances and heating systems have not been tested and therefore no warranties can be given as to their good working order.

 **RICS** | Regulated
Estate Agent
and Letting Agent

dexters.co.uk