

Elm Tree Road, NW8

£507 Per week

A modern two bedroom fourth floor (with lift) apartment in a portered block close to St Johns Wood High Street. Spacious reception room with balcony, modern open plan kitchen, double master bedroom with built in wardrobes and single smaller bedroom/ study.

Elm Tree Court is located in a quiet residential street a short walk from all local shops, cafés and restaurants on St Johns Wood High Street.

Features

Two Bedrooms
Private Balcony
4th Floor Via Lift
Porter
Communal Garden
Furnished

Elm Tree Road, London, NW8

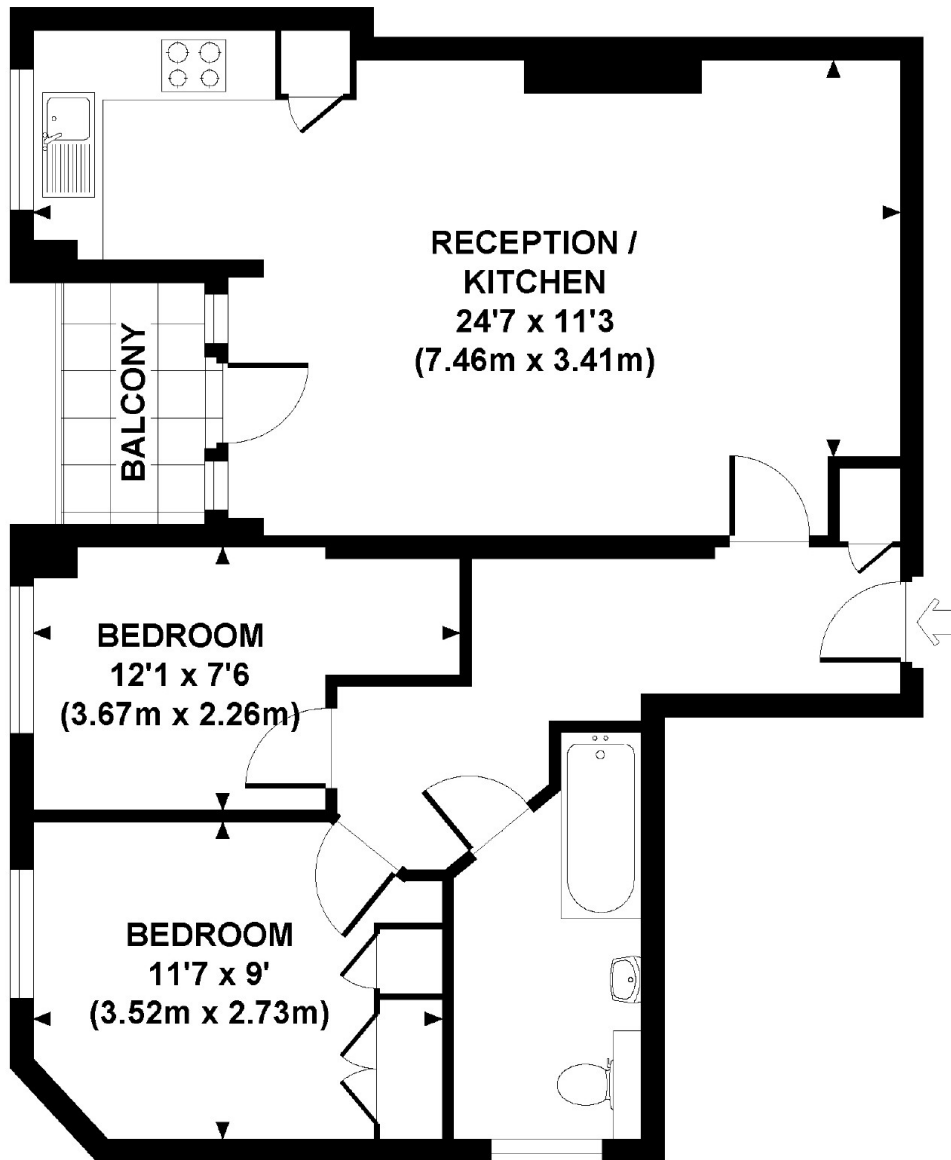
ELM TREE COURT, ELM TREE ROAD, NW8

Approx. gross internal area

611 Sq Ft / 56.8 Sq M.

Representation of current layout

Not to scale.



FOURTH FLOOR

Dexters

St. John's Wood
4-6 St Ann's Terrace
London
NW8 6PJ

Lettings
020 7483 6330

Energy Rating: G. We aim to make our particulars both accurate and reliable. However they are not guaranteed; nor do they form part of an offer or contract. If you require clarification on any points then please contact us, especially if you're traveling some distance to view. Please note that appliances and heating systems have not been tested and therefore no warranties can be given as to their good working order.

 **RICS** | Regulated
Estate Agent
and Letting Agent

dexters.co.uk