



## Park Road, NW8

£657 Per week

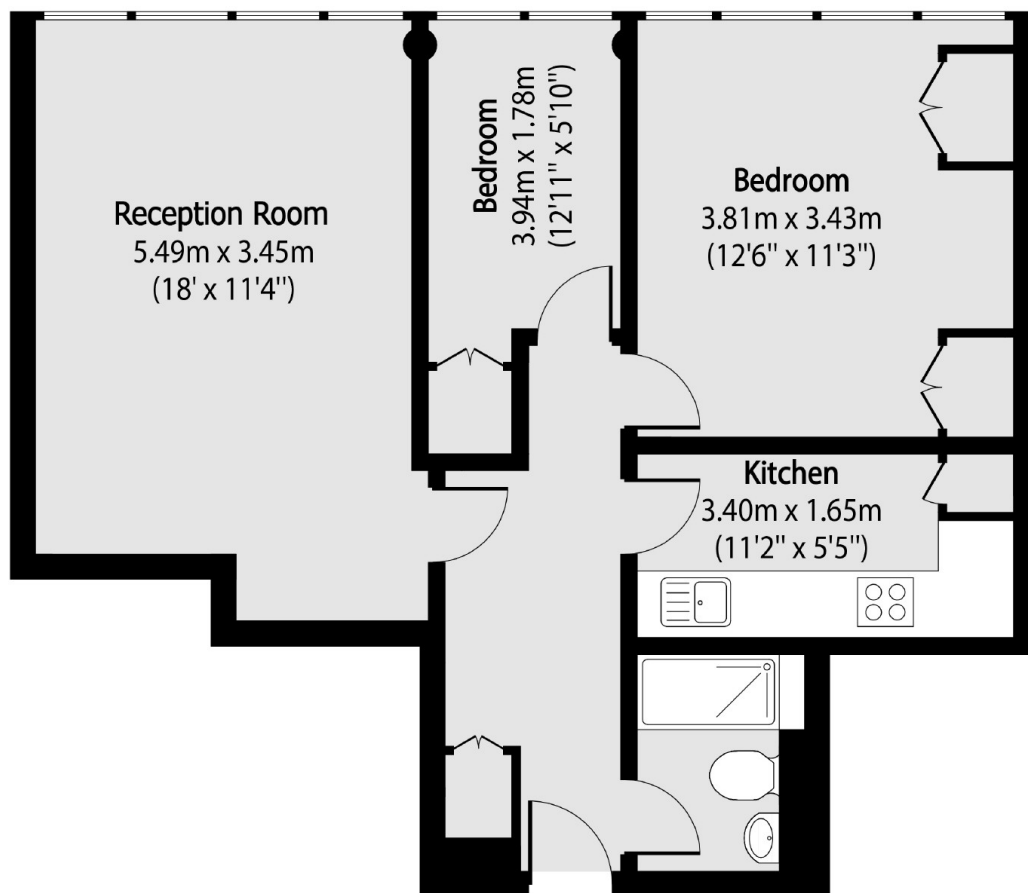
A two bedroom property on the first floor of a portered building. Spacious reception room, two double bedrooms, a modern fitted kitchen, bathroom and a wooden flooring throughout.

It is a short walk from local amenities with St. John's Wood station and Baker Street station within walking distance and only a stones throw from Regents park.

### Features

- Two Bedrooms
- One Bathroom
- Wooden Flooring Throughout
- Portered Building
- Close to Regents park
- Communal Heating and Hot Water

Park Road,  
London, NW8



Total area (approx): 55.09 sq m (593 sq. ft)