



Grove End Road, NW8

£750,000

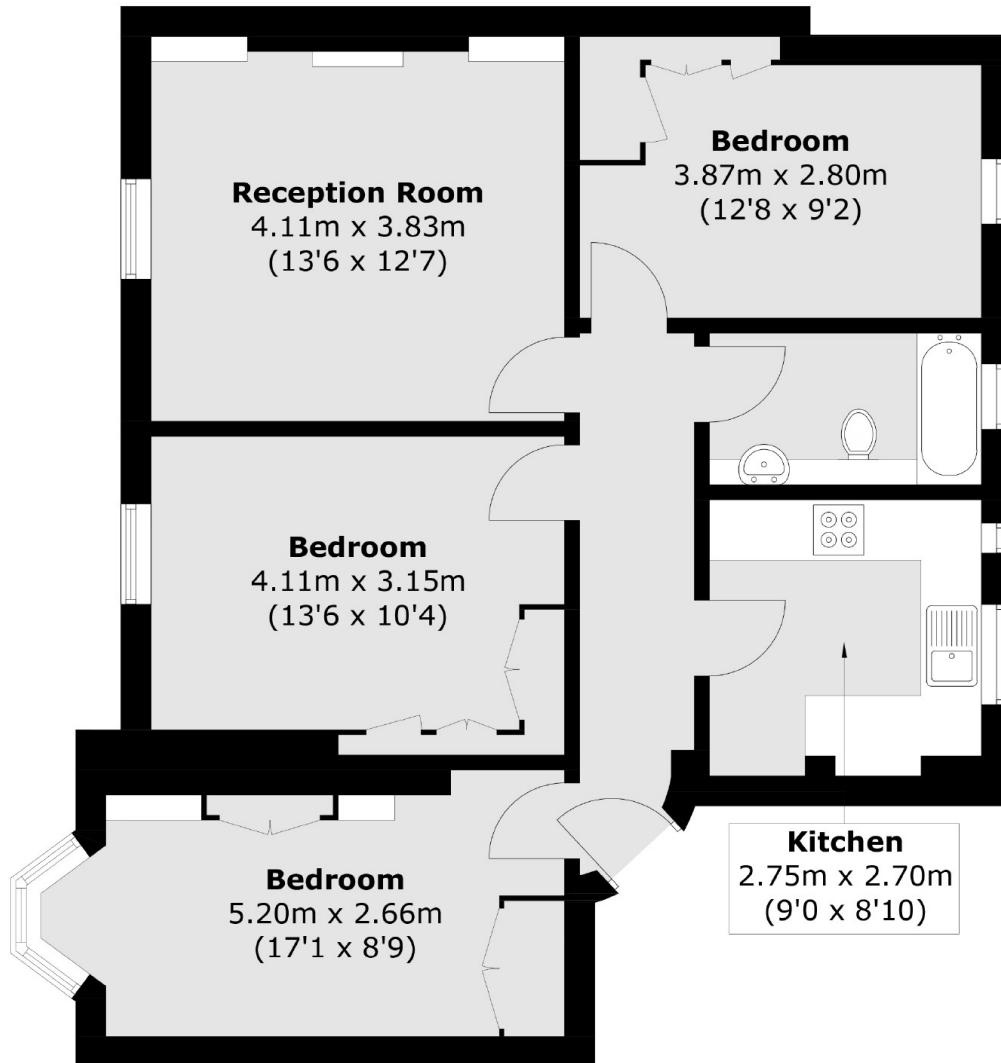
A spacious three double bedroom apartment situated on the third floor of this traditional, red-brick building. The property has a separate kitchen, spacious living room, three double bedrooms, bathroom and comes with a long lease. Further benefits include lift access, entry phone and has communal hot water included

Bronwen Court is located close to Lords Cricket ground, Regents Park and a short distance from St Johns Wood High Street.

Features

- Chain Free
- Three Double Bedroom
- Separate Kitchen
- Third Floor
- Lift and Entry Phone
- Communal Hot Water
- Long Lease

Grove End Road,
London, NW8



Total area (approx.): 73.4 sq. m (790.1 sq. ft)

Dexters

St. John's Wood
4-6 St Ann's Terrace
London
NW8 6PJ
Sales
020 7483 6300

Energy Rating: D. We aim to make our particulars both accurate and reliable. However they are not guaranteed; nor do they form part of an offer or contract. If you require clarification on any points then please contact us, especially if you're traveling some distance to view. Please note that appliances and heating systems have not been tested and therefore no warranties can be given as to their good working order.

 **RICS** | Regulated
Estate Agent
and Letting Agent

[dexters.co.uk](https://www.dexters.co.uk)