



Abercorn Place, NW8

£496 Per week

A recently refurbished one double bedroom apartment on the second floor in a portered block in St John's Wood. Bright reception room, semi open plan kitchen, double bedroom with storage and modern bathroom with shower over bath. Communal heating and hot water included.

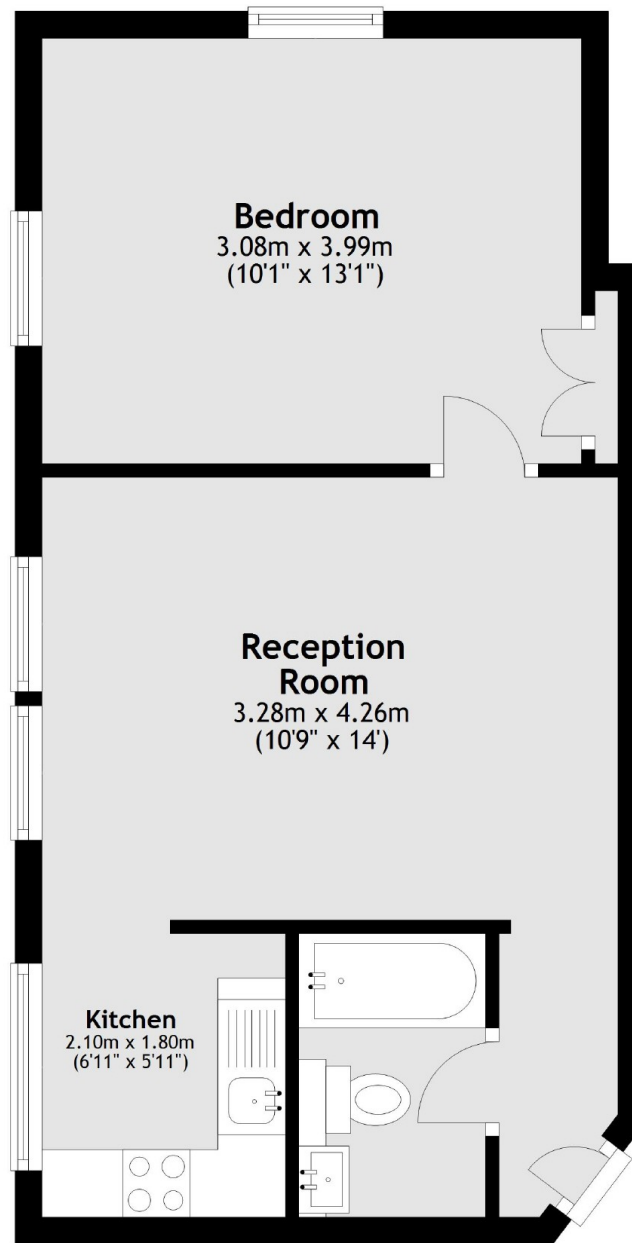
Abercorn Place is located on a residential street within easy access to both St John's Wood High Street and Maida Vale.

Features

Recently Refurbished
One Bedroom Apartment
Wood Floors Throughout
Second Floor Via Lift
Porter Service
Modern Kitchen & Bathroom

Abercorn Place,
London, NW8

Second Floor



Total area: approx. 36.5 sq. metres (392.9 sq. feet)