



Allitsen Road, NW8

£525 Per week

A modern two bedroom apartment on the third floor of a purpose built block close to Regents Park. The property benefits from wooden floors throughout, plenty of storage and separate kitchen.

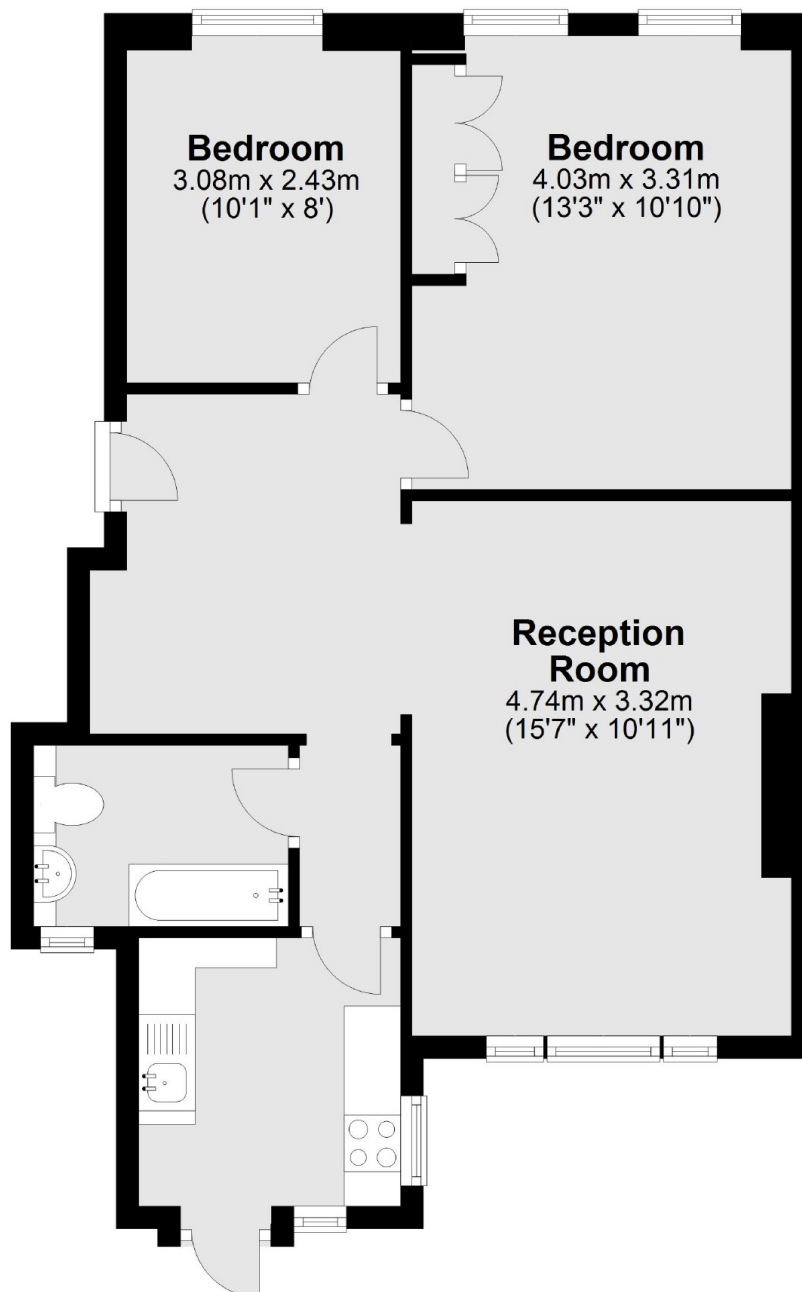
Townsend Court is located close to Regents Park and all local shops, cafés and restaurant's on St John's Wood High Street.

Features

Two Double Bedrooms
Third Floor via Lift
Communal Garden
Wooden Flooring
Separate Kitchen
Furnished

**Allitsen Road,
London, NW8**

Third Floor



Total area: approx. 57.5 sq. metres (619.2 sq. feet)