



## Hamilton Terrace, NW8

£2,900 Per week

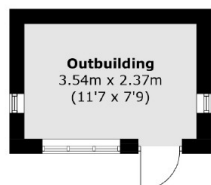
A modern four bedroom, three bathroom house arranged over five floors with a large rear garden and roof terrace.

Hamilton Terrace is a quiet tree lined residential street located in between St Johns Wood and Maida Vale giving residents great transport links into the city.

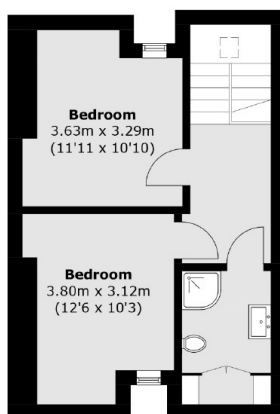
### Features

- Four Bedroom House
- Arranged Over Five Floors
- Large Rear Garden
- Two Reception Rooms
- Refurbished Kitchen
- Terrace Overlooking Garden

# Hamilton Terrace, London, NW8



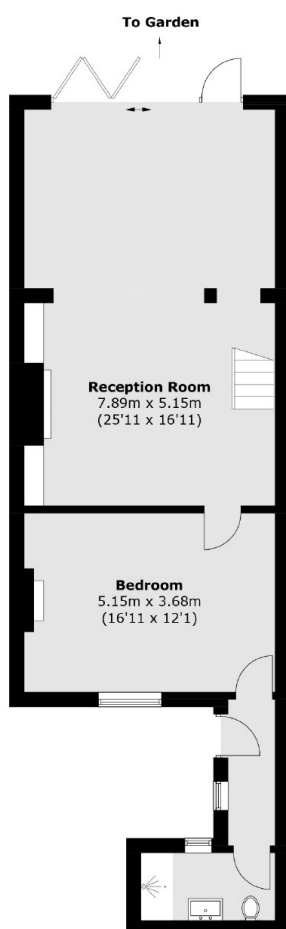
(Not Shown In Actual  
Location / Orientation)



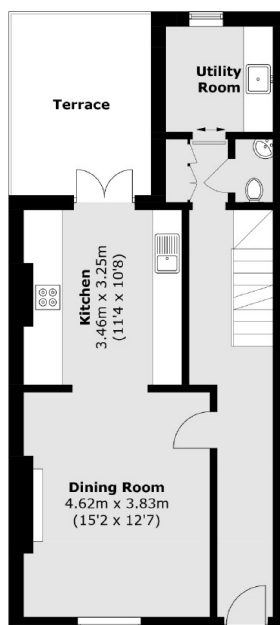
**Third Floor**



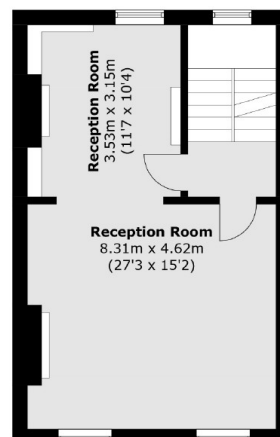
**Second Floor**



**Lower Ground Floor**



**Upper Ground Floor**



**First Floor**

Total area (approx.): 242.4 sq. m (2,609.1 sq. ft)  
Outbuilding: 8.5 sq. m (91.5 sq. ft)  
Terrace: 10.7 sq. m (115.2 sq. ft)