



St. Johns Wood Park, NW8

£1,153 Per week

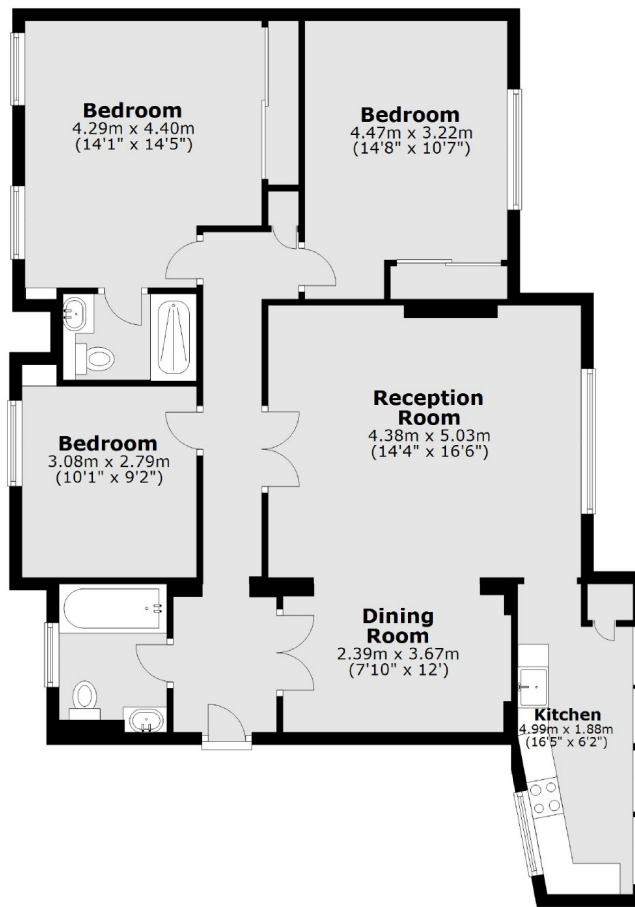
A spacious three bedroom, two bathroom apartment on the sixth floor in a 24 hour portered block. Bright reception room, separate kitchen, master bedroom with en suite bathroom, two further double bedrooms and family bathroom. Wood floors and good storage throughout.

Boydell Court is located next to Swiss Cottage underground station giving residents good access to transport links and local shops, cafés and restaurants on Finchley Road. Regents Park is also within walking distance.

Features

- Three Double Bedrooms
- Two Bathrooms
- Six Floor Via Lift
- Wood Floors Throughout
- Porter Service
- Communal Heating and Hot Water Included

St. Johns Wood Park, London, NW8



Total area: approx. 101.1 sq. metres (1088.5 sq. feet)

Dexters

St. John's Wood
4-6 St Ann's Terrace
London
NW8 6PJ
Lettings
020 7483 6330

Energy Rating: C. We aim to make our particulars both accurate and reliable. However they are not guaranteed; nor do they form part of an offer or contract. If you require clarification on any points then please contact us, especially if you're traveling some distance to view. Please note that appliances and heating systems have not been tested and therefore no warranties can be given as to their good working order.

 **RICS** | Regulated
Estate Agent
and Letting Agent

[dexters.co.uk](https://www.dexters.co.uk)