



Hall Road, NW8

£575 Per week

A one double bedroom on the top floor of a 24 hour portered block. Spacious reception room with views across London, separate kitchen, double bedroom with storage and a bathroom. Communal heating and hot water are included within the rent.

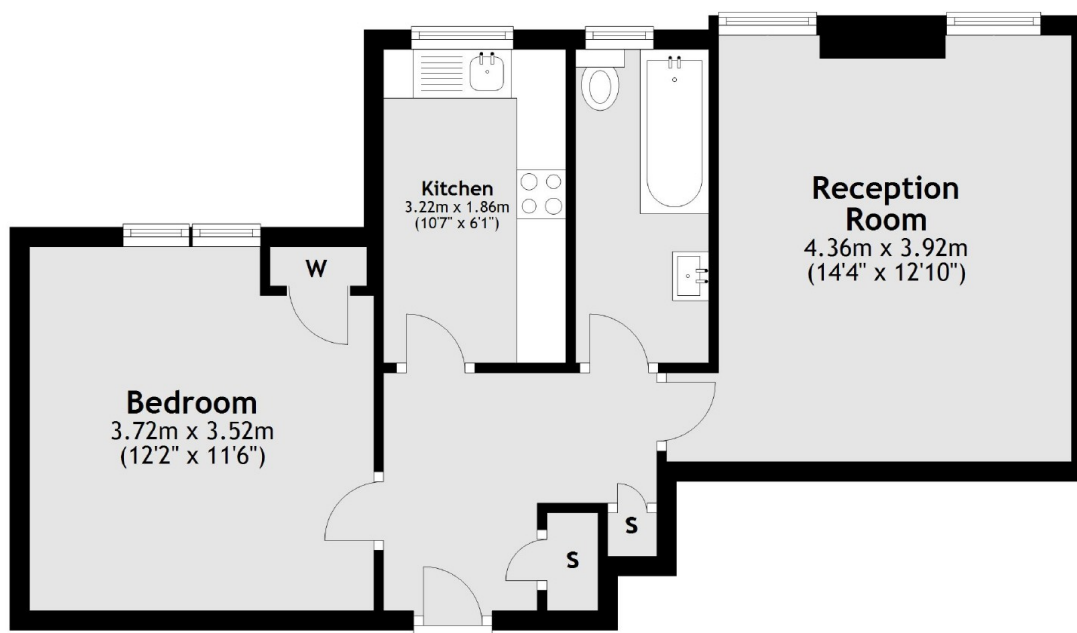
Grove Hall Court is located a short distance to St Johns Wood High Street and Underground station giving tenants great transport links into the city.

Features

- One Double Bedroom
- Top Floor Apartment
- Communal Heating and Hot Water Included
- 24 Hour Porter
- Good Storage

Hall Road, London, NW8

Ninth Floor



Total area: approx. 46.6 sq. metres (501.3 sq. feet)