



Church Street, NW8

£413 Per week

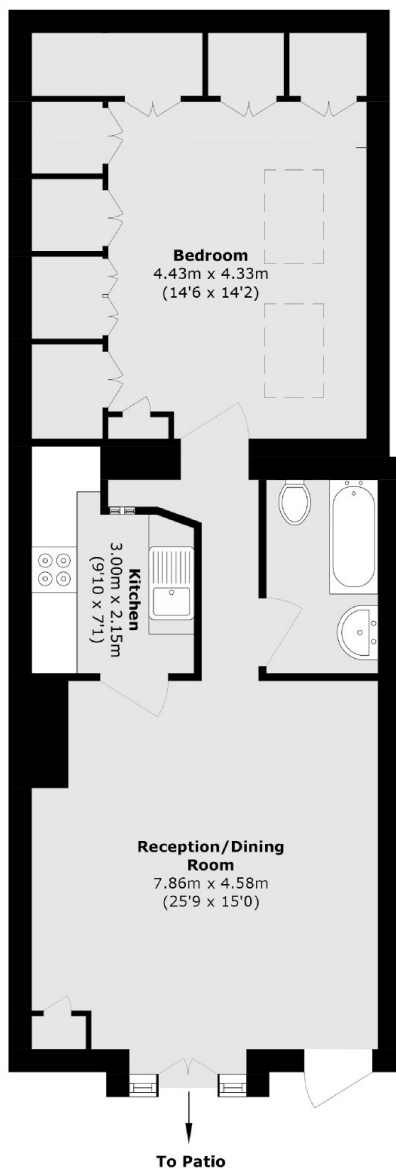
A spacious one bedroom apartment, set in a period conversion, on the lower ground floor. This property has a bright reception room, separate kitchen, large bedroom with storage and wooden flooring throughout.

Located on Church Street, moments away from Marylebone station and a short walk to Regents Park.

Features

- One Double Bedroom
- Lower Ground Floor
- Wooden Flooring
- Storage
- Separate Kitchen
- Good Location

Church Street, London, NW8



Total area (approx.): 61.1 sq. m (657.6 sq. ft)

Dexters

St. John's Wood
4-6 St Ann's Terrace
London
NW8 6PJ
Lettings
020 7483 6330

Energy Rating: C. We aim to make our particulars both accurate and reliable. However they are not guaranteed; nor do they form part of an offer or contract. If you require clarification on any points then please contact us, especially if you're traveling some distance to view. Please note that appliances and heating systems have not been tested and therefore no warranties can be given as to their good working order.

 **RICS** | Regulated
Estate Agent
and Letting Agent

[dexters.co.uk](https://www.dexters.co.uk)