



Charlbert Street, NW8

£553 Per week

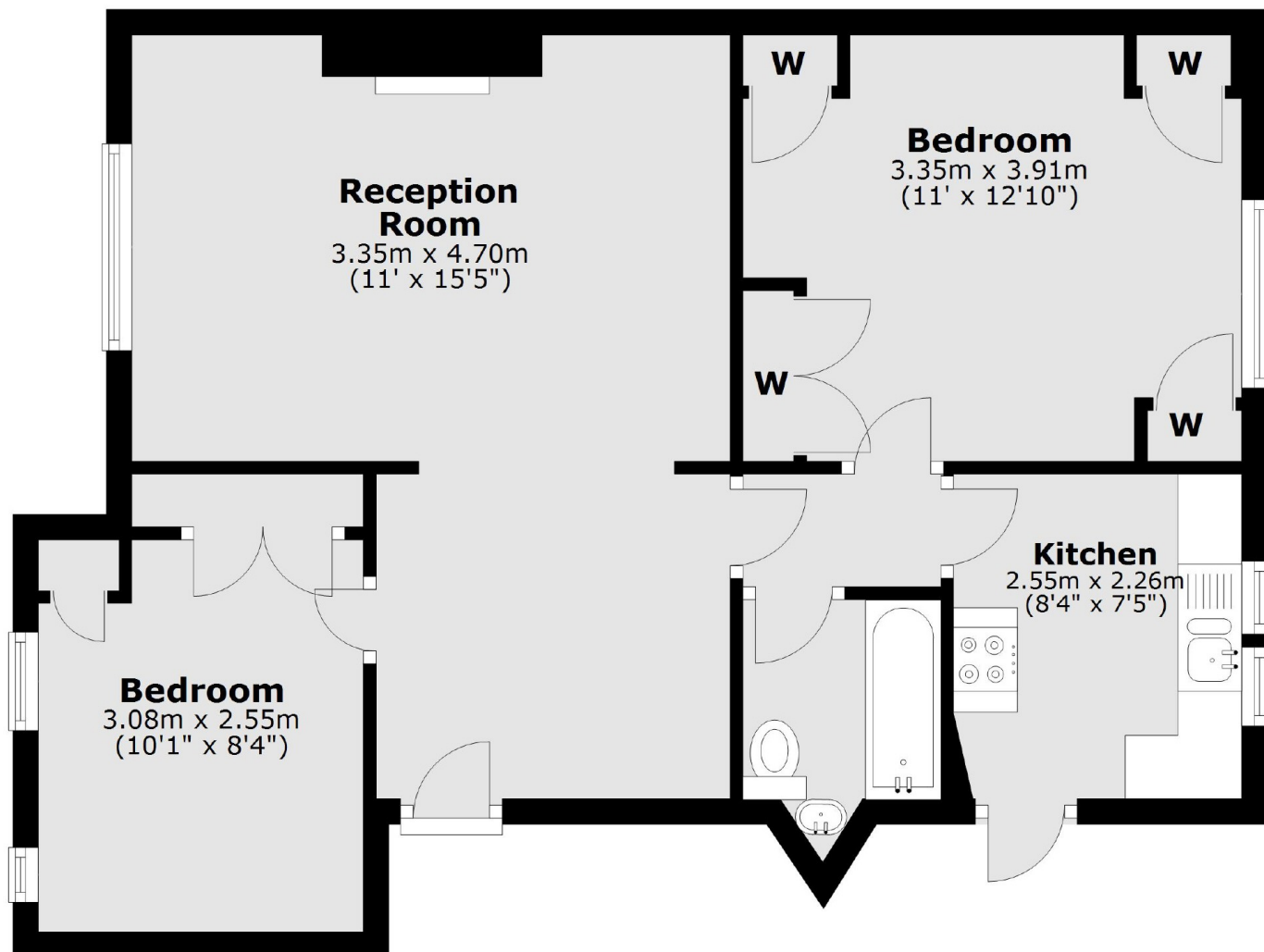
A top floor two bedroom apartment in a purpose built block close to Regents Park. Spacious reception room, separate kitchen, two double bedrooms and family bathroom. There is access to well maintained communal garden.

Charlbert Court is located close to Regents Park, Primrose Hill and St Johns Wood High Street which offers a range of shops, cafés, bars and restaurants.

Features

- Two Double Bedrooms
- Top Floor Apartment
- Communal Garden
- Spacious Reception Room
- Separate Kitchen
- Close to Regents Park

**Charlbert Street,
London, NW8**



Third Floor

Total area: approx. 56.5 sq. metres (608.6 sq. feet)