



St. James's Terrace Mews, NW8

£1,300 Per week

Located on a tranquil residential street, this spacious three bedroom townhouse offers easy access to Primrose Hill and Regents Park. Spanning four floors, it features an open plan kitchen/dining area, a 23 sq feet reception room with balcony access, a principal bedroom suite with built-in storage, two additional bedrooms with en suite facilities, an utility room, and an extra family bathroom.

St. James's Terrace Mews is on a serene residential street in central St. John's Wood. It's just 0.5 miles from St. John's Wood High Street and 0.7 miles from St. John's Wood underground station (Jubilee line). The American School of London is approximately 0.8 miles away. Nearby, residents can enjoy Primrose Hill and Regents Park for recreation.

Features

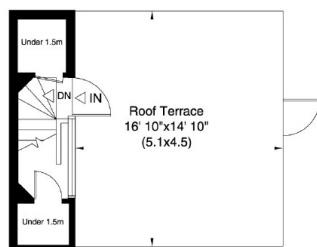
- Three Bathrooms
- Internal Garage
- Modern Condition
- Prime Location
- South Facing Terrace

St. James's Terrace Mews, London, NW8

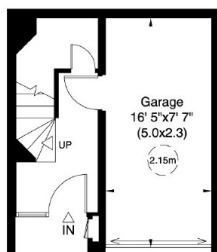
Gross internal area (approx.)
150 Sq m (1617 Sq ft) Including Under 1.5m
145 Sq m (1563 Sq ft) Excluding Under 1.5m
Void Area 4 Sq m (39 Sq ft)
For identification only, Not to Scale



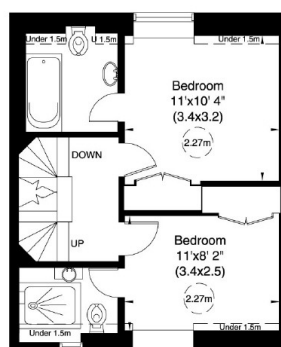
capital 020 8671 7722



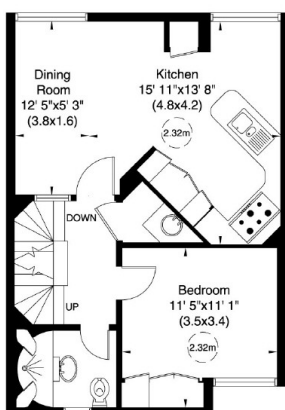
Gross internal area (approx.)
5 Sq m (58 Sq ft)
Including Under 1.5m
Gross internal area (approx.)
3 Sq m (32 Sq ft) Excluding
Under 1.5m



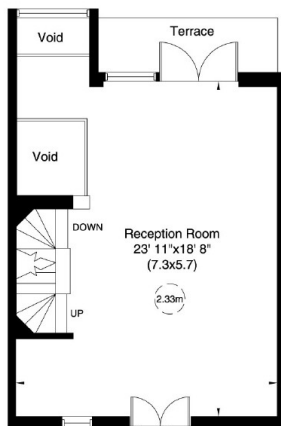
Ground Floor
Gross internal area (approx.)
20 Sq m (213 Sq ft)



Third Floor
Gross internal area (approx.)
38 Sq m (412 Sq ft) Including Under 1.5m
Gross internal area (approx.)
36 Sq m (384 Sq ft) Excluding Under 1.5m



First Floor
Gross internal area (approx.)
47 Sq m (507 Sq ft)



Second Floor
Gross internal area (approx.)
39 Sq m (427 Sq ft)

Dexters

St. John's Wood
4-6 St Ann's Terrace
London
NW8 6PJ
Lettings
020 7483 6330

Energy Rating: C. We aim to make our particulars both accurate and reliable. However they are not guaranteed; nor do they form part of an offer or contract. If you require clarification on any points then please contact us, especially if you're traveling some distance to view. Please note that appliances and heating systems have not been tested and therefore no warranties can be given as to their good working order.



dexters.co.uk