



Hall Road, NW8

£1,500,000

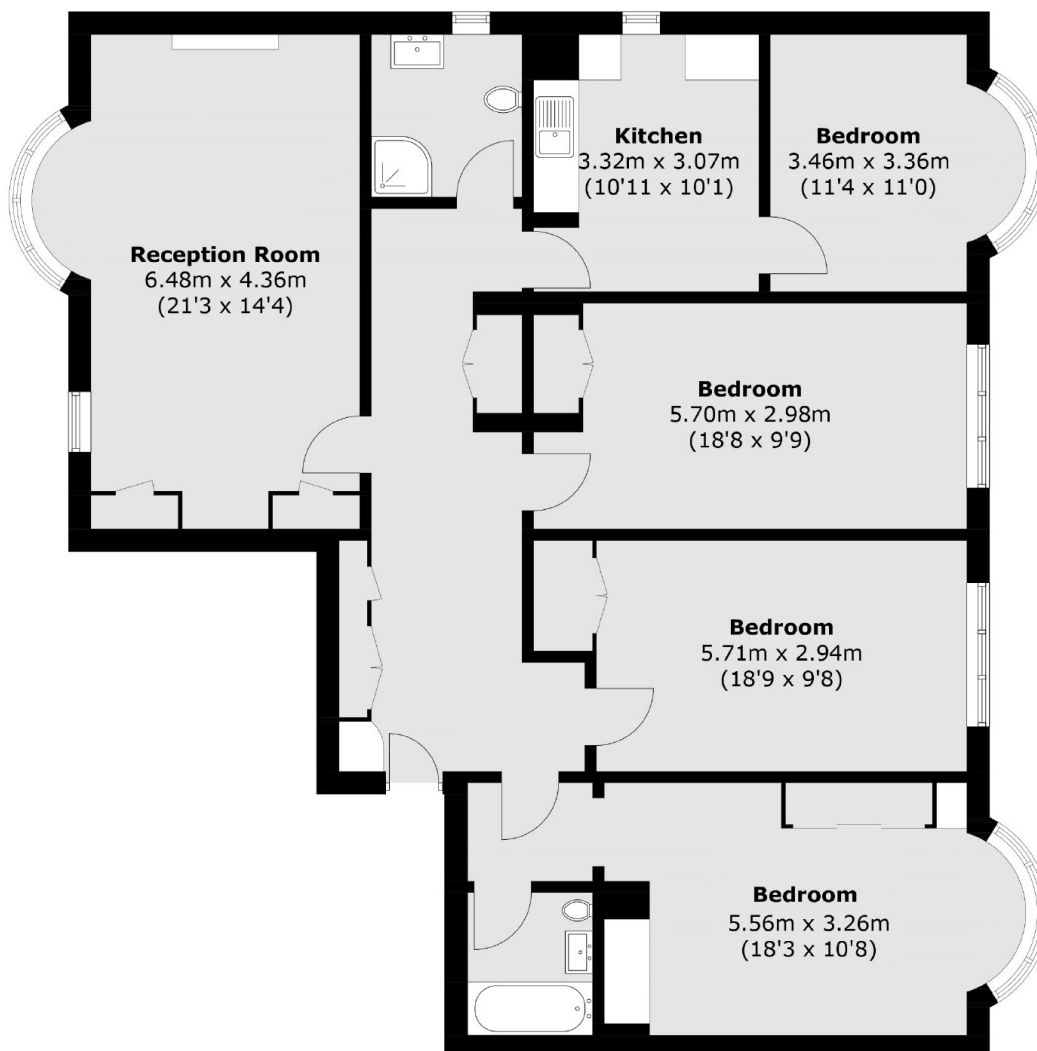
A spacious four bedroom, two bathroom apartment situated within a ported block on Hall Road in the heart of St Johns Wood. The property has 1382 square feet of well proportioned internal space, offering scope for modernisation and great long term potential.

William Court is located a short distance from St John's Wood tube station giving tenants great transport links to Central London and Canary Wharf on the Jubilee Line.

Features

1382 SQFT
Ported Block
Lift Access
Four Bedrooms
Two Bathrooms

Hall Road, London, NW8



Total area (approx.): 128.4sq. m (1,382.1 sq. ft)